



Suzhou **TOURISM** **Handbook**

2011 Winter Edition

一个你绝不能错过的
海洋世界与游乐园

梦幻乐园

亦真亦幻精彩不断

- 你可以在奇趣海洋世界，观赏云集10000多属珍贵鱼类的海洋奇观；欣赏海狮海豚、美人鱼、与鲨共舞、深潜潜水等精彩表演。
- 你可以在常熟唯一的水上游乐场中，感受多项惊险刺激的游乐项目。
- 你可以在3D影院尽情观赏奇妙无比的海底世界。

只有在这里，
你才能感受到无比的震撼！

欢享无限：

欢庆时刻，当然要与您挚爱的家人好友分享。苏州中茵皇冠假日酒店圣汐餐厅，在金鸡湖的迷人风光中为您呈献全球美食精粹。即日起，购买圣汐自助餐券便可享受买10送2优惠，与更多朋友欢享饕餮盛宴吧！

欢享无限尽在苏州中茵皇冠假日酒店

如需预定请拨打0512 6761 6688转分机6, 中国区免费订房电话400 88 40 888,
或访问我们的网站: www.crowneplaza.cn

营业时间: 8:30-16:30 (3月-11月) / 9:00-16:00 (12月-2月)
 门票价格: 成人: 150元 1.2~1.4米儿童、60~69周岁老人: 75元
 团队价格另行商议。

江苏海星岛实业有限公司 网址: www.histars.cn
地址: 江苏省常熟市昆承湖风景区 咨询电话: 0512-52309776/33335888

顾问

中国日报社江苏记者站站长
宋文伟

Consultant

Director of China Daily Jiangsu Office
Song Wenwei

苏州市旅游局副局长

徐伟荣

**Deputy director of Suzhou Municipal
Tourism Administration**

Xei Weirong

英文编辑

潘忠明

English editor

Pan Zhongming

中文编辑

朱胜文 沈琳

Chinese editor

Zhu shengwen Shen lin

艺术指导

杨娟 张龙

Art director

Janet Yang Dragon Zhang

美术编辑

肖伟明 杨光辉

Art editor

King Xiao Yang Guanghui

设计公司

北京阳光照耀文化传播服务中心

Designer

BJ Sunshine Culture & Media Service Center

感谢各供稿单位支持
编辑部电话

Thanks to all contributors
Editorial Department contact

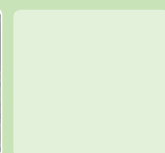
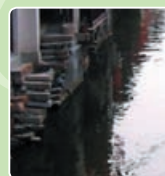
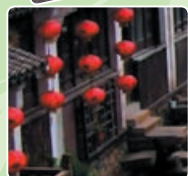


0512 6523 3131

CONTENTS

- 3 Top 10 romantic places to propose on Valentine's Day in Suzhou
- 8 Suzhou's Top 10 Warm Sites in Winter
- 13 Dr. Wang Rudong: director of Tourism Promotion Department, Suzhou Tourism Bureau
- 15 Listen to the bells of Hanshan Temple and pray for a harmonious life
- 17 Mudu, a historical and cultural attraction
- 20 Information for visitors
- 22 Event Calendar 2012

CONTENTS



O Holy Night , The stars are brightly shining...

With the choir's melodious song, white Christmas tree in the lobby of Grand Metropark Hotel Suzhou sends out holy light. The pure white and soft golden colors add radiance and beauty to each other.
Who will you meet here on Christmas Eve 2011?

Metropark Christmas Eve Buffet Dinner at Sipis cafe
18:00-20:30, 24 December 2011

You will enjoy grand Christmas Eve gala dinner,
including Boston lobster and Australian beef,
free flow of hot red wine,

Philippine live band performance, the choir's classic song,
special Christmas gifts, big lucky draw...

RMB 688 net per person for adult

RMB 398 net per person for child (under 1.4 meters)

For more information or reservations, please call **(0512) 6280 0666**


港中旅酒店有限公司
HK CTS Hotels Co., Ltd.

1355 Jinjihu Avenue, Suzhou Industrial Park, Suzhou 215021, P.R. China
中国·苏州·工业园区金鸡湖大道1355号 (国际科技园) 邮编: 215021
Tel: 86 (0) 512 6280 0666 Fax: 86 (0) 512 6292 0777
Web: www.hkctshotels.com/suzhou

Top 10 romantic places to propose on Valentine's Day in Suzhou

"I like you. Do you like me?" "I don't know, but we can try."

The Sea of Plum Blossoms

— More than Three Stanzas of Plum Blossoms

Reason for being selected: Chiung Yao said, "Can somebody tell me what is love supposed to be? That makes me hold no fear in the face of death. With your absence, my existence is meaningless on Earth. Can somebody



tell me how many stories there are in the world? Nothing can surpass the Three Stanzas of Plum Blossoms." It is thus clear that the plum blossoms can not be separated from love. On the Valentine's Day, the Sea of Plum Blossoms in Suzhou is always full of plum blossoms. Among the flowers and the fragrance you and your

sweetheart will be full of happiness.

Romance index: ★★★★★

Traffic route: No. 63, 65 or 43 Bus

Per capita spending: 20 yuan

Introduction to the scenic spot: The Sea of Plum Blossoms in Guangfu should be the most time-honored and culture-enriched place in China for watching plum blossoms. It is said that the plum blossoms here are the best in the world. They are of wide varieties and cover the mountains and plains, making visitors feel like they are in fairyland. The Qing Dynasty Emperors Kangxi and Qianlong visited it nine times, and wrote many poems about it.

Ferris wheel — A legend that proves happiness

Reason for being selected: There is a beautiful legend about the ferris wheel that people in love who cuddle each other when reaching the top of the ferris wheel will be happy forever. It seems that the magical ferris wheel is full of happiness. So, when we looking up at it, we are actually looking at happiness. Suzhou people say: eat Mister Softee as on the ferris wheel and feel the sweet kiss.

Romance index: ★★★★★

Traffic route: No. 168, 138, 120, 108, 258 or 28

Bus and SIP Sightseeing Bus

Per capita spending: 80 yuan

Introduction to the scenic spot: The Ferris Wheel Park is located in Suzhou Industrial Park, at the highest point of the eastern bank of Jinji Lake. It attracts people's eyes and makes the eastern bank extremely popular. It takes about 25 minutes for the ferris wheel to make a round trip. The door is widely opened so that the visitors can enjoy the sights from all directions. You can feel the great momentum of the city integrated with both ancient and modern features by viewing it from above.



Lingyan Mount. Temple

—Resort featuring peach blossoms

Reason for being selected: The temple ranked the 8th among the 2011 Top 10 Chinese Places for Praying for Love, proving that it is a lucky place to say goodbye to single lives. People in love can go together to climb Lingyan Mount, and pray for happiness. Their faces must be as beautiful as peach blossoms.

Romance index: ★★

Traffic route: No. 58, 4 (for Sightseeing), 91, 315, 63, 64, 65, 43 or 621Bus

Per capita spending: 1 yuan

Introduction to the scenic spot: Lingyan Mount located near Mudu Town, Suzhou, is one of the most famous ashrams of Pure Land Buddhism of China as well as a famous historical site and tourist attraction. There are many ganodema shaped rocks so the mountain is called Lingyan Mount. The temple stands on the top of the mountain, overlooking Taihu Lake with its beautiful and splendid landscape. It has been designated by the State Council as one of the key Buddhist temples in the Han nationality region of China.

Shangri-La Hotel — Where Daniel Wu proposed in a movie

Reason for being selected: In the movie Don't Go Breaking My Heart, Louis Koo and Daniel Wu proposed to Gao Yuanyuan at the same time, and the girl finally accepted the proposal of Daniel Wu. This scene was shot at the Shangri-La Hotel in Suzhou. Why can't it happen in reality? Shangri-La



Hotel should be a very good place for making a marriage proposal. Come here on Valentine's Day to propose to the one you love.

Romance index: ★★★★★

Traffic route: No. 2, 303, 304, 30, 312, 333, 40 (west ring road), 40 (east ring road), 68, 69, 89, 51, 33, 69

(interzone), 30 (north ring road), 30 (south ring road), 31, 3 (for sightseeing) or 38 Bus, getting off at Philips Station

Per capita spending: 200 yuan (for buffet)

Introduction to the scenic spot: Shangri-La Hotel Suzhou is a high-grade business hotel located in the high-tech zone of Suzhou. It is consisted of 54 floors, with a total height of 232 meters, serving as a landmark super-high building of Suzhou. It has been honored as one of "China's Top 100 Hotels for 2008" by Travel+Leisure and one of the "Best Business Hotels in China for 2008" by M Media Group under Forbes China.

Couple's Garden — The "Provence" of Suzhou

Reason for being selected: The Couple's Garden represents the dream of the garden's owners (Shen Bingcheng and his wife) for a secluded life in which to share all of their joys and sorrows. It reflects eastern romance. On Valentine's Day, people in love can visit the garden to imagine the scene in which that husband and wife treated each other with courtesy, expecting a good future.

Romance index: ★★★★★

Traffic route: Take No. 602 Bus to West Street, and then walk 111 meters; Take No. 318, 47 or 932 Bus to East Street, and then walk 379 meters; Take No.39, 47, 935 or 5 (for sightseeing) Bus to Panmen Scenic Spot North, and then walk 402 meters;

Take No. 200, 51, 522 or 7 Bus to Xinshiqiao North, and then walk 475 meters;

Take No. 602 Bus to Jiqing Street, and then walk 557 meters.

Per capita spending: 15 yuan

Introduction to the scenic spot: The Couple's Garden is located in Xiaoxin Lane, Cang Street, Suzhou. It consists of two gardens and is thus named the Couple's Garden, which also indicates the hope of the couple to live here together. It has an agreeable layout, featuring a rockery made of yellow stone, which seems natural, well-located, steep and majestic. The rockery is a representative work of the yellow-stone rockeries in the Suzhou gardens.

Dushu Lake Christ Church — Witness of the Cross

Reason for being selected: The church is a holy place to witness love. The Dushu Lake Christ Church not only boasts an amazing landscape and splendid Western-style architecture, but also serves as a place for many couples to hold weddings and have their true love witnessed by God. Whether you are a Christian or not, as long as you are pious, you will be blessed by God. Tell your sweetheart that you love him (or her) on the Valentine's Day witnessed by the priest, and leave a fabulous and romantic memory for both of you.

Romance index: ★★★★★

Traffic route: No. 142 or 162 Bus

Per capita spending: For free

Introduction to the scenic spot:

The Dushu Lake Christ Church is a Gothic architecture, featuring the close integration of religious doctrines and artistic elements. With great artistic appeal, the penetration and influence of religious doctrines are enhanced. Meanwhile, the aesthetic value of the church is highlighted. The tabemade of the church is the biggest and most beautiful in Suzhou, also of Gothic style and embraced by the mysterious atmosphere of a religious building.



Tongli — Three bridges

Reason for being selected: There is a custom in Tongli that, as a part of the wedding ceremony, the bride's sedan should go across three bridges. A folk saying goes, "The bride and the bridegroom will have mutual affinity and grow old together after going across the three bridges." It symbolizes "harmony, good luck and eternal youth". On Valentine's Day, people in love can visit the three bridges and practice to be a bride and a bridegroom.

Romance index: ★★

Traffic route: Wuzhong District Bus Station-Tongli: tourist bus (6:40-17:15)

running every 20 minutes;

Suzhou Southern Bus Station-Tongli: Bus to Tongli running every half hour; Tel: 0512-65276527

Suzhou Bus and Railway Station-Tongli: Bus from Suzhou Railway Station (7:15-17:15, every day, taking about one hour to Tongli at a price of 8.5 yuan.

Per capita spending: Free visit to bridges; 100 yuan for joint ticket for visit to Tongli Town Scenic Spot

Introduction to the scenic spot: Tongli has a number of bridges, which endow the town with profound culture and forge the formation of a variety of folk customs, including the most famous custom to go across the "three bridges". Such a custom is also called "taking a road for peace" and "taking a road against all diseases", bearing the hope of people for health and peace. The local people consider the bridges to be symbols of luck.



The ancient canal — Venetian romance

Reason for being selected: As Venetian culture cannot be separated from water, the romance of "Oriental Venice" is closely related to the ancient canal. People in love can take the "Gondola" to go into the "heaven of water" under the shadow of the lamps: walls, small bridges, weeping willows and the setting sun... You will immerse yourself into Chinese romance with the lingering charm of the ancient times, feeling especially sweet.

Romance index: ★ ★ ★ ★ ★

Traffic route: Take No. 522 Bus, and get off at the Xinshiqiao North Station and walk for two minutes ;

Take No.2 or 5 for Sightseeing Bus, and get off at the Xinshiqiao South Station and walk for one minute;

Take No. 602, 305, 47, 522, 70, 7 or 39 Bus;

Per capita spending: 80 yuan

Introduction to the scenic spot: The ancient Suzhou City by the side of the Beijing-Hangzhou Grand Canal was a "heaven" drawing all merchants. People can travel down the river by boat at night to appreciate the grace and exquisiteness of the one-thousand-year-old ancient city through the lights and buildings at the banks. There are 10 ancient gates (including the Pan Gate, Xu Gate, Jin Gate and Lu Gate) and 20 bridges of different styles along the route.

Canglang Pavilion — Couple's happiness

Reason for being selected: As recorded in the famous Six Chapters of a Floating Life, Shen Fu and his wife Yun enjoyed a happy life in the place where the Canglang Pavilion is located. Wedded Bliss gives a portrait of the scene that they enjoyed under the glorious full moon, which has moved people of



several generations. People in love can visit the pavilion to feel their deep love.

Romance index: ★ ★ ★

Traffic route: No. 2, 4 (for sightseeing), 5 (for sightseeing), 1, 5, 27, 30, 39, 101, 102, 218, 261, 308 or 309

Per capita spending: 20 yuan

Introduction to the scenic spot: Canglang Pavilion, a world cultural heritage site, is located near Sanyuanfang in the southern part of the Suzhou City. It has the longest history among the existing gardens of Suzhou. It was built in the Song Dynasty as the private garden of scholar Su Shunqin, covering an area of 1.08 hectares. There is a stream of water running through the garden, showing a beautiful scene with reflections in the shimmering water.



The Shanghu Lake — 'the lake of love'

Reason for being selected: Due to the love story of Liu Rushi and Qian Qianyi that happened on the bank of the Shanghu Lake, young artists usually call Shanghu Lake "the lake of love". The gifted scholar and beautiful lady made a wise choice so that they lived a happy life on the bank of the Shanghu Lake. Why? Imagine that you and the one you love enjoy the lake scenery full of love, you should be only envious of love, not of immortality.

Romance index: ★ ★ ★

Traffic route: Wuzhong District Bus Station, Suzhou Southern Bus Station and Suzhou Northern Bus Station to Changshu Bus Station Changshu buses (one yuan/ticket) : No. 116, 117, 125 or 118 Bus

Per capita spending: 60 yuan

Introduction to the scenic spot: Shanghu Lake is located in the west of Changshu, near Yushan Mountain and named after the story about the fishing of Jiang Ziya (Jiang Shang). Currently, the lake covers an area of 800 hectares. It contrasts with the 10-li Yushan Mountain, showing a three-dimensional landscape with water, mountains, green land and blue skies.



Hanshan Temple

Reason for being selected: On December 31 there is a grand event in Hanshan Temple where a great number of visitors attend to listen to the bells and pray for fortune and blessings on New Year's Eve. At that time the temple is crowded, brightly lit and full of a joyful atmosphere. It is an ideal destination in winter.



Introduction: The Bell-listening Program of Hanshan Temple on New Year's Eve has been held for 32 years. As one of the earliest tourist programs, it has become a unique name card of Suzhou - the Oriental Venice and a paradise

city. The 33rd Program "Listening to Bells of Hanshan Temple, Pray for A Harmonious Life" will kick off soon. Harmonious Culture is an important cornerstone of traditional Chinese culture. Hanshan Temple, one of the Top 10 Temples of China, is well-known in Japan, Hong Kong, Macao and Taiwan as a soulful venue for intellectuals who love the Chinese culture. The melodious bell will bring the Harmonious Spirit and artistic conception to each and every visitor; enrich them and refresh them.

Warm index: ★ ★ ★ ★ ★

Traffic route: Take Tourism Bus 3, Bus 313, 6, 9, 17, 2, 31 or 301 and get off at Heshan Bridge East

Per capita spending: 20yuan/person normal days, 320yuan/person on the days when the bell-ringing program is held.

Suzhou Hot Springs

Reason for being selected: Though Japan's hot springs are often mentioned, Suzhou also has its own hot springs. No need to travel a long distance, you can enjoy a green, natural and splendid hot spring spa amid beautiful sites. In the face of such a warm place in winter, how could you resist such an attraction?

Introduction to the scenic spot:

Tianyi Hot Spring: Located in the southern hillside of Qizi Mountain. It was said Xi Shi (a famous beauty in the ancient times of China) had penciled her eyebrows there. Today Huamei (penciling one's eyebrow) Spring Mouth takes place at Suzhou Huanxiu Resort & Spa and Tianyi Hot Spring was named after it.

Suzhou Fairyland Ever-Joy Hot Spring: Located in Shushan Village - a beautiful natural eco-village with convenient traffic conditions. The water entertainment programs are integrated into the comfort and cozy hot springs for the first time to create a unique hot spring water world.



Suzhou Yangshan Hotspring Resort: A hot spring complex integrating hot springs, a conference center, catering center, holiday hotel, development center and entertainment facilities.

Suzhou Scholars Tree Hill Resort & Spa: Located in Shushan Eco-Resort of Suzhou New District, operated by Scholars Inn, with excellent services and a comfortable environment.

Warm index: ★ ★ ★ ★ ★

Traffic route:

Suzhou Tianyi Hot Spring: take Bus 503 and get off at Wangshan Dongwan Stop, and walk about 100 meters.

Suzhou Fairyland Ever-Joy Hot Spring: Get off at Shushan Village by Bus 316/ Bus 316 Long-Distance

Suzhou Yangshan Hotspring Resort: Bus 327 or 302 to Yangshan Hotspring Resort

Suzhou Scholars Tree Hill Resort & Spa: Bus 316 or 321

Per capita spending:

Suzhou Tianyi Hot Spring: 148yuan/person Monday-Friday, 168yuan/person Saturday and Sunday

Suzhou Fairyland Ever-Joy Hot Spring: 198yuan/person

Suzhou Yangshan Hotspring Resort: 138yuan/person

Suzhou Scholars Tree Hill Resort & Spa: 158yuan/person

Mudu

Reason for being selected:

There are two reasons for you to come to Mudu in winter: the mutton of Cangshu Town and Qionglong Mountain. Mutton is hot in nature and nourishing and can help dispel cold. Mutton of Cangshu Town, Mudu, is quite famous in Suzhou. After eating the delicious mutton, you can climb Qionglong Mountain to enjoy the great views at the peak while keeping fit.



Introduction to the scenic spot: Mudu is an ancient water town that enjoys a history as long as Suzhou of more than 2,500 years. It was said by the late Spring and Autumn Period, Fuchai, king of the Wu Kingdom, built Guanwa Palace and Gusu Platform on the top of Lingyan Mountain to please Xi Shi, "collecting materials for three years and being completed in five years". The timber flowed in and blocked the rivers. That's why this place was named Mudu.

Warm index: ★ ★ ★ ★ ★

Traffic route: Bus 38, 64, 69, 2, 622 or 663

Per capita spending: coupon ticket 60yuan/person

Dongshan

Reason for being selected: Dongshan is often mentioned as its



mutton dishes and stewed mutton are a must. Compared with the mutton dishes of Cangshu Town, Dongshan's stewed mutton offers you a different taste. It is really a great joy to have mutton dishes of different cuisines in one place. You can also bicycle around

Taihu Lake and enjoy the beautiful views while keeping fit.

Introduction to the scenic spot: Dongshan is a peninsula extending to Taihu Lake, surrounded by waters on three sides and constituting the vast and beautiful Taihu Lake Scenic Spot together with 72 peaks such as Dongting West Hill, Dengwei Mountain of Guangfu Town. Dongshan enjoys a long history and a number of scenic views and cultural relics left by emperors, generals, ministers, scholars and poets in history. There are well preserved buildings, Xi's Residence Garden by the river and the Phoebe Nanmu Hall of the Ming Dynasty. In the neighborhood of the town there are many scenic spots such as the Color Arhat of Zijin Nunnery, ancient buildings of the Ming and Qing dynasties in Luxiang Ancient Village and Lingyuan Temple at the foot of Biluo Mountain.

Warm index: ★★★★★

Traffic route: Bus 502, 62, 621, 624, 629 or 627

Per capita spending: no ticket, subject to actual consumption.



Taicang

Reason for being selected:

In Shuangfeng Town of Taicang there is a food street of mutton dishes, where you can feast on mutton of different styles. After enjoying the delicious mutton, you can look around Jincang Lake Garden to refresh yourself.

Introduction to the scenic spot: Taicang has launched a program to upgrade the tourist industry by holding the Travel and Culture Festival, food festival, peony festival and bicycle carnival and Shuangfeng Town mutton festival. It has set up the Tourist Distribution Service Center and Taicang Tourist Center of 2010 Shanghai Expo. Jincang Lake has been listed as a national water conservation scenic spot and wetland park of Jiangsu Province.

Warm index: ★★★★★

Traffic route: Direct bus from Suzhou Southern Bus Terminal or Northern Bus Terminal

Per capita spending: no ticket is needed for Jincang Lake Park and the rest is subject to actual consumption.

Suzhou Fairyland

Reason for being selected: Suzhou Fairyland is also nicknamed the "Disneyland



of Suzhou" with a complete package of recreational programs. If you feel it is too cold in winter and Disneyland is too far away, you can enjoy yourself in Suzhou Fairyland.

Introduction to the scenic spot: Suzhou Fairyland is a modern theme park integrating lively, cheerful, carefree spectacles, the programs of Western amusement parks and quiet and natural features of Oriental parks. It is one of the first AAAA tourist spots and a famous amusement park of China.

Warm index: ★★★

Traffic route: Bus 2, Tourist Bus 3, 33, 37, 38, 51, 68, 69, 89, 303, 304, 312, 333 and 313

Per capita spending: 130 yuan

Pingjiang Road



Reason for being selected: Pingjiang

Road in winter will leave you with a warm impression thanks to its well decorated and well equipped boutiques and tea houses on both sides of the road.

You can have a cup of tea and some candies in the shops by the road when you get tired.

Introduction to the scenic spot:

In the oldest map of Suzhou Pingjiang Map of the Song Dynasty there was Pingjiang Road, which has maintained its original structure and length over the past 800 years. It is still parallel to the river with small bridges standing over the flowing stream and buildings standing on both sides with white walls and black tiles. The water lanes by Pingjiang Road, especially those on the eastern side, have been well preserved and make Pingjiang Road the most ancient area of Suzhou with the original features of a water city.

Warm index: ★★★

Traffic route: Bus 301 or 305

Per capita spending: free, subject to the actual consumption

Suzhou Culture and Arts Centre

Reason for being selected: If you do not like the chilly weather in winter on the streets, Suzhou Culture and Arts Center will be a good choice for you. You can enjoy excellent performances in the unique building every day.

Introduction to the scenic spot: Suzhou Culture and Arts Center (formally Science and Culture Center) is located by the beautiful Jinji Lake, consisting of the Performance Center, Film & TV Center, Shopping Center and the Culture Center. The Film & TV Center is the permanent awarding base of the Golden Rooster Award and the only national five-star cinema of Suzhou.



Warm index: ★★★

Traffic route: Get off at International Expo Center by Bus47, 108 or 28

Per

capita spending: Subject to actual consumption



Guanqian Street

Reason for being selected:

It is the most prosperous section of Suzhou with numerous boutiques and shopping malls. If you do love shopping, you must try this street where you will feel warm no matter whether you are in the boutiques or large shopping malls.

Introduction to the scenic spot: Guanqian Street is a public entertainment venue integrating commerce, recreation, catering and culture facilities, like Fuzimiao in Nanjing, Chenghuangmiao in Shanghai and Tianqiao in Beijing. Guanqian Street is famous for Xuanmiao Temple, just like Fuzimiao being famous for the Confucius Temple and Chenghuangmiao for Yuyuan Park.

Warm index: ★★★★★

Traffic route: Bus 1, 5, 102, 8, or 933

Per capita spending: Subject to actual consumption



Zhouzhuang

Reason for being selected: If you feel cold only in winter in Suzhou, it is because you have not visited Zhouzhuang where a series of folk programs will be held in winter to greet the new year.

Introduction to the scenic spot: Located in Kunshan of Suzhou, Zhouzhuang is a typical water town built among rivers with bridges connecting with streets. It is an outstanding representative of traditional Chinese culture, a cradle of Wu culture and model of water town south of the Yangtze River.

Warm index: ★★★★★

Traffic route: Kunshan Bus 130

Per capita spending: 100 yuan



Dr. Wang Rudong:
director of Tourism
Promotion Department,
Suzhou Tourism Bureau



The 1st stop: **North Temple Pagoda**

As a landmark building in the ancient downtown of Suzhou, the 1,700-year-long North Temple Pagoda overlooks the panorama of the ancient city. You may also appreciate the ancient culture's new attraction from its long history.

The 2nd stop: **Suzhou Arts and Crafts Museum**

Suzhou Arts and Crafts Museum is a collection of brilliant modern arts and crafts created by skillful Suzhou craftsmen in various art expressions and diverse techniques, a window through which to see intangible cultural heritage, and a reflection of the profound historical and cultural significance and exquisite traditional handicrafts of Suzhou.

The 3rd stop: **Suzhou Museum**

Suzhou Museum, the final masterwork of architecture master Leoh Ming Pei, contains the great architect's deep love for his hometown. His design concept "Traditional but Modern" conveys a typical Suzhou-style historical outlook of the inclusiveness of traditions and the world. As a masterpiece of the new cultural heritage, Suzhou Museum is worth a visit.

The 4th stop: **Humble Administrator's Garden**

As a world cultural heritage site, the Humble Administrator's Garden is a classic representative of Suzhou classical gardens. Strolling around the pavilions, pagodas and terraces, you can feel the gentle Suzhou people's pursuit of an exquisite life. The Garden also partly represents Suzhou people's low-profile personality. Crossing through numerous primitive gates in the Garden, you may offer the same praise as the ancient poet who wrote, "Where hills bend, streams wind and the pathway seems to end; Past dark willows and flowers in bloom lies another village."

Lunch: Pingjiang Road

Pingjiang Road is dotted with Suzhou-style snack booths and various western-style restaurants. Sitting at a riverside tavern, watching ordinary Suzhou people fire up stoves and wash clothes, and hearing the sweet and agreeable Suzhou dialect, from any aspect, the lunch will be seasoned with a little Suzhou flavor.

The 5th stop: **Pingjiang Road**

In the afternoon, slow down your pace and feel the warm sunshine in the winter along Pingjiang Road. Find a teahouse of your favorite style to order a cup of tea, read a book or have a nap, probably that is the typical Suzhou-style life.

The 6th stop: Cold Fragrance Society

Cold Fragrance Society, a creation studio of seven disabled artists, is named after the proverb "bitter cold adds keen fragrance to plum blossoms" to highlight their enterprising spirit. It is not only a showcase of Suzhou people's concern and aid to the disadvantaged group but also an instructive place for all visitors.

The 7th stop: Pingtan Museum

At your leisure, listen to storytelling and have a cup of tea in the courtyard of the Pingtan Museum to enjoy the melodious and rhythmic Pingtan and the agreeable life of traditional Suzhou people.

Boarding: Pingjiang Hostel, Pingjiang Fu, Mingtown and other Suzhou-style hotels are recommended for you to experience a boarding culture combining traditional Suzhou culture and modern commercial service.

The 8th stop: Kunqu Opera Museum

As an intangible cultural heritage with elegant diction and graceful melody, Kunqu Opera has been a common aesthetic delight of Suzhou's intellectuals and officialdom. Just pay a visit to the Kunqu Opera Museum to experience the exquisite life of the noble families. Fantastic special performances are presented on Sunday afternoons.

Director Wang's Tips

A range of wonderful festival events are scheduled in Suzhou's winter. For instance, listening to the bells in Hanshan Temple, an event successfully held for 32 sessions attracting numerous visitors and highlighted by bright lanterns, is filled with the happiness of bidding farewell to the past and welcoming the lunar New Year. Hanshan Temple is a soulful land for domestic and foreign scholars fond of Chinese culture. Melodious bells from Hanshan Temple will convey the best-known spirit of harmony and enchantment of poems and essays into the heart of each listener.

In winter, you can enjoy comfortable natural hot spring baths in Suzhou without troubling yourself to visit Taiwan or Japan. Hot spring baths contribute to health cultivation and healthcare. In Suzhou, besides hot spring baths, amenities for preserving health, physical therapy, catering and recreation are also good choices to relax.

The ancient water towns of Suzhou have continued the several-century-long folk customs for rapturously celebrating the lunar New Year. Giving a vivid representation of the traditional culture of Suzhou water towns, these colorful events constitute a rarely-seen primitive humanistic panorama.



Listen to the bells of Hanshan Temple and pray for a harmonious life





The verses of "dreaming of visiting the regions south of the Yangtze River for thirty years, only for listening to the bells of Hanshan Temple alone" reflect the everlasting pursuance of the Chinese people. "Visit the One-Thousand-People Stones on Haiyong Mountain in the morning and listen to

the bells on Maple Bridge at night". "Visit Maple-Bridge Temple (another name of Hanshan Temple) seven years later, and again, listen to the bells at night" -- These poems record the memory of the scholars and poets in the history about the bells of Hanshan Temple. For more than 1,000 years, The Night of Maple Bridge (a poem) has been inspiring the people from both home and abroad to listen to the bells of Hanshan Temple.

For 32 years, at the end of each year, people from all the streets and lanes of Suzhou will wait for the 108 ringing of the bell of Hanshan Temple, which are said to be able to drive away troubles, make people smarter and enlighten the Bodhicitta. Listeners are also from Japan, South Korea, Singapore, Thailand, the United States, Italy and other countries.

As one of the earliest tourist events of China, the activity to listen to the bells of Hanshan Temple is becoming a brand of the paradise-like Suzhou, which is also known as the "oriental water city".

The 33rd event of "Listening to the bells of Hanshan Temple and praying for a harmonious life" will soon open. The "culture of harmony" has been



a major cornerstone of the splendid traditional culture of China and also an important symbol of the origin of the harmonious culture of China. Hanshan Temple ranks among the Top 10 Chinese Temples and is widely known in Japan, Hong Kong, Macao and Taiwan. It is also a soul harbor for domestic and overseas scholars and poets who fancy for Chinese culture. The melodious bells of Hanshan Temple take the spirit of "harmony" that has been embraced for thousand years and the artistic

conception contained in the poems into the heart of each tourist so that they can feel the culture and integrate it into their lives.

Again, the bells of Hanshan Temple will be heard at the New Year's Eve, when people from both home and abroad will gather at Maple Bridge to listen to the bells and welcome the New Year.

Mudu, a historical and cultural attraction

Unlike other ancient towns in the southern part of the Yangtze River, Mudu, the closest town to Suzhou in East China's Jiangsu province, will not be labeled as a town of small bridge with floating water, ancient small lanes amidst drizzles.

Situated among the hills and rivers, Mudu is an ancient town full of historical anecdotes and culture. It can be understood by its name. Mu means woods and Du rivers, hence a town of woods and rivers. Why?

By the end of the Spring and Autumn Periods (770 BC-476 BC), the Wu Kingdom and Yue Kingdom were at war: Wu defeated Yue and the later presented the beautiful woman Xi Shi to Fu Chai, the King of Wu. To please Xi Shi, Fu Chai decided to build the Guanwa Palace on the Lingyan Hill. For three years, woods were transported to the small town by the side of the hill, blocking the rivers in the area and leaving the town its name Mudu.

Different from other ancient towns, Mudu is surrounded by continuous hills which are not high but upstanding. They form a natural green screen, adding some masculine elements to the town. The surrounding mountains include Lingyan Hill, Gusu Hill and Qizi Hill.

Lingyan Hill is where the Guanwa Palace was set up by the King of Wu for the beauty Xi Shi. Gusu Hill is where the two kings of Wu set up Gusu Terrace and Qizi Hill is the military fortresses built by the Kingdom of Wu.



The culture of several thousands of years has nurtured the compatibility and generosity of people in Mudu. More than 200 years ago, the imperial painter Xu Yang during Emperor Qianlong's reign once painted a long scroll depicting the prosperous view of Suzhou. On the scroll, about half of the scene depicts Mudu, a migrant town at the time. There are groceries run by people from Hangzhou, official salt from Yangzhou, silk from Suzhou and local specialty from Dongting of Suzhou.

Even today, traces of these views such the neighboring stores, elegant gardens, old and simple stone bridges can still be tracked among the

remaining landscape in the town.

The generosity of Mudu is implicit and hushed up. This is because the cultural accumulation in the past several thousand years has formed its strong confidence. If you quietly push open an unattractive old-style door,



you could probably unveil a hidden private garden that has been ignored for a long time. Its owner could probably have gone for a visit, or be studying in the reading room or hosting a poem contest with his friends by the side of the pond in the garden.

At a time when the sunshine penetrates the lattice windows on the wall along the walkways, you may also hear the noise outside the wall, which seemingly separates the home with the outside world. When you return to the life of the town, you may be surprised by the long history that is so close to you. You will feel as if the old town is an old man who is quietly observing the younger generations.

Nurtured by the culture of 2,500 years, Mudu has also brought forth many celebrities. Between 1015 and 1902, 24 successful candidates in the highest imperial examinations and 28 provincial graduates were from Mudu. These elites made prominent achievements in politics, economics, science and culture. They were born and brought up or had lived in the town, creating a legendary humanity history for Mudu.

Many has concluded that the anima of the splendid hills and water: It sounds natural because Mudu collects all the beautiful scenes in the area of Suzhou. Yet across China, many areas boast wonderful landscape but not so many celebrities, indicating that the elites have nothing to do with the natural scene.



Others say it is because of the influence of the long history and culture. It holds some water as the town has a history of 2,500 years. However, China is an ancient country of civilization, there are many old towns with a history of more than 1,000 years. Not so many towns saw such a glory. This indicates that there must be more profound internal factors.

A couplet hanging at the Shangxian Hall of the Yan's Family Garden has revealed the tradition of showing esteem to prominent people that has been passed down for generations in the town. The Yan's Family Garden was originally named Muyuan Garden, meaning admiring the prominent people. It might probably be because of such a historical environment, the ancient town of Mudu has brought forth many celebrities.

The ancestors have left a great legacy to its later generations. The magnificent classic gardens have become an inexhaustible cultural treasure of the town.

As early as the turn of the Ming and Qing dynasties (1644-1911), the town had more than 30 private gardens. More than 10 are remained. They are quite different in style.

The Guanwa Palace at the Lingyan Hill was the imperial garden built by King Fuchai of the Wu Kingdom during the Spring and Autumn Period for the beauty Xi Shi. It helped Mudu keep numerous historical records of the time;

The Lingyanshan Temple on the Lingyan Hill and the ancient Mingyue Temple at the foot of the hill were typical temple gardens that carried on the profound Buddhist culture in the south of the Yangtze River in ancient time;

Lingyanshan Villa is a representative garden with hill and water. The garden integrates real hill with real water; and,



Among the many private gardens in the township, there are both delicate and exquisite typical Suzhou-style gardens and grandeur imperial-style gardens.

Various gardens of different time, different types and different styles form a complete 3-D history of classic gardens in Mudu.

In recent years, Mudu ancient town renovated and opened four gardens of the Yan's Family Garden, Hongyin Shanfang, Ancient Pine Tree Garden, and Bangyan's Residential House.

The Yan's Family Garden is the former residential house of Yan Jiagan, former "president" of Taiwan. It covers an area of 16 mu (one hectare). The magnolia tree in the garden was said to be planted by Emperor Qianlong of the Qing Dynasty when he toured in the southern part of the Yangtze River and stayed in the compound. Its Shangxian Hall is built in the Ming Dynasty style with nanmu (phoebe zhennan) wood. The Four-Season Mini-Garden is known for its arrangement and is called the "classical masterpiece of garden in the south of the Yangtze River" by Professor Liu Dunzhen, a renowned modern architect in China.

Hongyin Shanfang is a famous private garden in the southern part of the Yangtze River during the reign of Emperor Qianlong of the Qing Dynasty. Its stream, hill, pond, pavilion, flowers and trees are far better than those in other gardens. For six times when Emperor Qianlong visited the south of the Yangtze River, he would get off the boat and stay at Hongyin Shanfang. His companions had also stayed there and left many touching stories.

Hongyin Shanfang consists of two Ming-style gardens of Xiuye Garden and Xiaoyin Garden. The Xiaoyin Garden is the former residential house of Shen Shou, the "Queen of Embroidery" in China, and Xiuye Garden is both a museum where emperor's decrees are kept and a museum for the ancient imperial examination system.

Ancient Pine Tree Garden at Shantang Street is known for a Ming Dynasty pine tree with a history of more than 500 years. The garden is the former residential house of Cai Shaoyu, a rich local businessman in late Qing Dynasty. It is known for its well-preserved brick carving at the entrance gate.

Bangyan's Residential House is the former residential house of Feng Guifen, a modern political theorist. It is a typical Qing Dynasty garden. It is known for its brick carving, wood sculpture and stone engraving. The garden is based on a pond in the center with the proper arrangement of pavilions, gazebos, walkways, bridges and rockeries.

These gardens have made the town of Mudu China's only ancient garden-like township.

Besides the gardens and natural scenic spots, the "12 Girls in Suzhou" is also a reason for tourists to come to Mudu. The 12 girls indicate women engaged in 12 sectors of boating, embroidery, weaving, tea-service, fan-making, lamp-making, musical instrument-playing, silkworm-raising, flower cultivating, singing, painting and shell-pearl-raising.

Author: 潘忠明



The 4th Suzhou Spring Festival Shopping Fair 2012

Time: January

Venue: Guanqian Street

Exhibition of special purchases for the Spring Festival



The 10th Guxumen Lantern Show

Time: Feb. 25-Mar.1

Venue: Guxumen Square

Folk Cultural Activities of Xuanmiao Temple to celebrate the Spring Festival and pray for blessings

Time: Spring Festival period

Venue: Xuanmiao Temple

Dharma assembly on the eve of Spring Festival; programs ushering in Plutus and praying for blessings; Dharma assembly to celebrate birthday of Jade Emperor



Program ushering in immortals at the City God Temple

Time: Spring Festival period

Venue: City God Temple, Jingde Road

Parade of ushering in Plutus

Pingjiang Lantern Show

Time: The 15th Day of the first lunar month

Venue: Pingjiang Historical Street

Lantern riddle competition on the Lantern Festival, Pingjiang Road



Our Festival – Annual Fair of Huqiu Opens

Time: Spring Festival period

With the theme of "Celebrating the Year of the Dragon in Huqiu, Praying for Blessings of All Families of China", the Huqiu Annual Fair highlights the happy atmosphere of the Spring Festival with colorful lighting and ornamental flowers. The annual fair has red and gold as its colors, which represent happiness and harvests respectively.

The Chinese character Fu (happiness) over the gate and the swimming fish design imply happiness and surplus every year, leaving visitors with a deep impression of auspiciousness and the atmosphere of the Spring Festival.



Inviting the Gods of Wealth to Shantang as part of the New Year celebration

Time: The fifth day of the lunar January

Venue: Shantang Street

The ceremony for Inviting the Gods of Wealth is a traditional folk ceremony. Suzhou has been following the tradition to invite the Gods of Wealth (namely the Gods of Wealth from the eastern, western, southern, northern and middle sides) on the fifth day of the lunar January. The ceremony is an integrated one based on the traditional ceremonies and the geographic conditions of Shantang scenery spot, featuring communication with the people on site to provide comfort for common people and businessmen. The auspicious and joyous festival ceremony creates a harmonious social atmosphere. The ceremony is a pioneering and unique practice that is only held in Shantang scenery spot each year. It has become one of brands of Shantang festival culture.

Celebrate New Year in Hospitable Luzhi

Time: Mid-December 2011 to Early February 2012

Five themes of the event:

New Year Travel: Travel and enjoy the riverside scenery, ecological environment and ancient culture of Luzhi

New Year Feast: Puli Pork Feet, Puli Duck, Puli Soup, Aozhao Noodle, Pumpkin Pie, Dish Cooked with Eight Sorts of Vegetables, "Sock-Bottom" Shortbread, Malus Spectabilis Cake and Luzhi-style Dried Turnip

New Year Gifts: Spring Festival couplets with the Chinese character "Fu", pearl necklace and postcard themed on the ancient town

New Year Prayers: Pray at Zhanglin Garden

New Year Performance: Performance at the ancient-style stage of Jiangnan Culture Park



Seasonal Pleasure in Zhangpu Enjoy fresh food in winter

Time: Early December

Venue: Seasonal Pleasure Zhangpu Service Center

"Enjoy the nourishment in winter and keep health for the next year." "Enjoy the nourishment during the third nine-day period after the winter solstice and keep away from disease in the next year." The winter activity of the 2011 Seasonal Pleasure in Zhangpu will soon begin. A Zhangpu-style feast with fresh vegetables, fruits, original agricultural and sideline products and home-style dishes will be provided. It will be not only nutritious for your exhausted body but also will warm your heart and remind you of your childhood, hometown style and happy experience.



苏州国际博览中心2012年展会活动计划表

Event Calendar 2012 of Suzhou International Expo Center

展会项目 Events	举办时间 Time
2012苏州春季人才交流会 zhou Spring Talent Fair 2012	1月14日 Jan. 14th
如新公司年会 Nu Skin (China) Business Summit	2月4日 Feb. 4th
大金空调年会 Daikin Annual Meeting	2月10日-2月11日 Feb. 10th-11th
安利大会 Amway Annual Meeting	2月11日-12日或20日-21日 Feb. 11th-12th or 20th-21st
2012苏州婚庆文化产业博览会（春季） Suzhou Wedding Expo (Spring) 2012	2月24日-2月26日 Feb. 24th-26th
第9届苏州国际工业博览会 The 9th Suzhou International Industrial Expo	3月8日-3月10日 Mar. 8th-10th
2012春夏品牌服装服饰（苏州）博览会 Suzhou Spring & Summer Clothings and Accessories Fair 2012	4月2日-4月16日 Apr. 2nd-16th
2012中国（苏州）国际茶博会 China Suzhou International Tea Expo 2012	4月 April
2012第4届中国（苏州）精细化工及技术装备展览会 The 4th China (Suzhou) Fine Chemical and Technology Equipment Exhibition 2012	4月12日-4月14日 Apr. 12th-14th
2012第13届亚太电子(苏州)展览会 The 13th Asia-Pacific Electronics Industry Expo 2012	4月19日-4月21日 Apr. 19th-21st
2012中国（苏州）文化创意设计产业交易博览会 China Suzhou Cultural & Creative Industry Expo 2012	4月26日-4月28日 Apr. 26th-28th
用友软件企业年会 UFIDA Software Annual Meeting	5月5日 May. 5th
第16届苏州住宅产业博览会 The 16th Suzhou Real Estate Industry Exposition	4月29日-5月2日 Apr. 29th-May. 2nd
2012苏州电路板展览会 Suzhou PCB Show 2012	5月9日-5月11日 May. 9th-11th
2012苏州表面贴装展览会 Suzhou SMT Show 2012	5月9日-5月11日 May. 9th-11th
2012苏州电子组装展览会 Suzhou Assembly Show 2012	5月9日-5月11日 May. 9th-11th
2012苏州复合材料展 Suzhou COMPOSITES Expo 2012	5月17日-5月19日 May. 17th-19th
2012苏州风能大会 Suzhou WINERGY Expo 2012	5月17日-5月19日 May. 17th-19th
2012中国（苏州）科学育儿嘉年华暨孕婴童产品展览会 Suzhou Baby Expo 2012	5月31日-6月2日 May. 31st-Jun. 2nd
上花（苏州）2012年春季渔具展 Suzhou Fishing Tackle Trade Fair (Spring) 2012	6月15日-6月17日 Jun. 15th-17th
2012年金鸡湖国际商务旅游合作发展峰会暨亚太商务及会奖旅游展览会 Asia-Pacific MICCE Summit & Fair 2012	6月17日-6月18日 Jun. 17th-18th
苏州国际家具展览会 Suzhou International Furniture Fair 2012	6月27日-7月2日 Jun. 27th-Jul. 2nd
2012苏州国际精英创业周 2012 Suzhou International Elite Week	7月10日-7月16日 Jul. 10th-16th

展会项目 Events	举办时间 Time
如新2012年年会 Nu Skin Conference	7月 July
第10届中国呼吸医师论坛 The 10th China Breathing Physicians Forum	8月3日-8月5日 Aug. 3rd-5th
2012 苏州葡萄节暨苏州果品饮品博览会 Suzhou Grape Festival 2012	8月10日-8月14日 Aug. 10th-14th
苏州婚庆文化产业博览会(夏季) Suzhou Wedding Expo (Summer) 2012	8月24日-8月26日 Aug. 24th-26th
中华医学会第17次全国眼科学术大会 National Congress of Chinese Ophthalmological Society	9月4日-9月8日 Sept. 4th-8th
2012中国（苏州）阳澄湖大闸蟹国际商务文化节 China Suzhou Yangcheng Lake Crab Festival for Pro-Business Culture 2012	9月-12月 Sept.-Dec.
第6届中国太阳能节暨国际新能源展 The 6th China Solar Energy Festival and International New Energy Fair	9月13日-9月15日 Sept. 13rd-15th
苏州国际节能环保技术及设备展览会 Suzhou International Environmental Conservation Exhibition	9月13日-9月15日 Sept. 13rd-15th
第五届中国纸包装工业瓦楞纸箱彩盒包装印刷展览会暨高峰论坛 THE 5th China PPI Corrugated, Converting Packaging & Printing Industry Exhibition and Forum	9月13日-9月15日 Sept. 13rd-15th
2012中国（苏州）国际汽车博览会 China (Suzhou) International Automobiles Industry Expo 2012	9月20日-9月24日 Sept. 20th-24th
2012中国东方国际自行车电动车暨动力电源博览会 China Eastern Bicycle & Accessories Expo 2012	9月21日-9月23日 Sept. 21st-23rd
2012中国东方国际户外用品博览会 2012 Eastern Outdoor Show	9月21日-9月23日 Sept. 21st-23rd
第17届苏州住宅产业博览会 The 17th Suzhou Real Estate Industry Exposition	10月1日-10月4日 Oct. 1st-4th
苏州国际数控机床及金属加工工业展 Suzhou International Metalworking and CNC Machine Tool Exhibition	10月11日-10月14日 Oct. 11th-14th
金蜘蛛紧固件展 Fastener Trade Show	10月11日-10月14日 Oct. 11th-14th
2012中国苏州电子信息博览会 2012 Electronic Manufacturing Exposition China (EMEX Suzhou)	10月18日-10月21日 Oct. 18th-21st
2012中国苏州国际纳米技术成果与产品展 CHINANO Exhibition 2012	10月27日-10月29日 Oct. 27th-29th
2012中国洁净展 China Cleanroom Show 2012	10月26日-10月28日 Oct. 26th-28th
第三届兽医大会 The 3rd Chinese Veterinary Conference	10月28日-10月30日 Oct. 28th-30th
2012“欢乐金秋”苏州购物节 Suzhou Shopping Festival 2012	11月18日-12月3日 Nov. 18th-Dec. 3rd
2012中国(苏州)国际生物科技展 2012 China (Suzhou) International Biotech Exhibition	11月23日-11月25日 Nov. 23rd-25th
上花（苏州）2012年冬季渔具展 Suzhou Fishing Tackle Trade Fair (Winter) 2012	12月14日-12月16日 Dec. 14th-16th
2012中国（苏州）优质农产品展销会 Suzhou Agricultural Products Trade Fair 2012	12月14日-12月17日 Dec. 14th-17th
江苏产品万里行 Jiangsu Commodities Trade Fair	巡展，时间及展出城市待定 To be confirmed



苏州国际博览中心
Suzhou International Expo Center

苏州—中国商务会奖目的地城市
Suzhou: The MICE Destination in China

SUZHOU INTERNATIONAL EXPO CENTER

苏州国际博览中心地处苏州工业园区CBD核心区域，整体像一把打开的巨扇，外观优雅清新，气势磅礴，是集展览、会议、节庆、商务、餐饮、休闲于一体的大型专业会展场馆。中心周边聚集了众多国际领先、国内一流的高品质商务配套资源，为客商营造愉悦、欢畅、高雅的商务氛围。自2004年10月正式投入运营以来，已成功举办众多国际、国内知名展会。苏州国际博览中心将凭借优越的地理位置、发达的经济基础、丰富的旅游资源、完善的场馆设施、一流的亲商服务，脱颖而出成为长三角地区、中国，乃至亚太地区大型展览、会议、活动的重要场馆之一。

Located in the CBD core area of the Suzhou Industrial park, Suzhou International Expo Center spreads out like a huge and elegant fan. Since its grand opening on the 20th Oct., 2004, SuzhouExpo was put into operation and grew up to a comprehensive complex of exhibitions, conferences, events, business service, catering, entertainment and etc., which has hosted quite many major international trade shows, conferences and entertainment events. It is concentrated with many world leading and domestically top-ranking high-end business resources, including star-ranking hotels, fashionable leisure and entertainment facilities. With the privileged geographic location, well-developed economy, rich tourism resource, high-standard venue facility and first-class service, SuzhouExpo will play an important role not only within the Yangtze River Delta Area but also in China and Asia Pacific Area.



成就中国会展巨擎

Expertise for future



展览 / Exhibition

会议 / Convention

活动 / Event

餐饮 / Catering

188600 sqm	占地面积 Site Area
255000 sqm	建筑面积 Floor Area
69000 sqm	室内展览面积 Indoor Exhibition Space
35000 sqm	室外展览面积 Outdoor Exhibition Space
15000 sqm	会议面积 Convention Area
2520 sqm	多功能厅 Multifunctional Hall
500 seats	报告厅 Auditorium Hall
30	会议室数量 Meeting Rooms
30	周边5星级酒店数量 Five-Star Hotels Around
158	苏州星级酒店数量 Star Hotels in Suzhou



城市周边有6个机场
百公里范围内有4个港口
境内外有3条高速公路
贯通3条国道，京沪高铁、沪宁高铁

Six airports around
Four ports within 100 kilometers
Three expressways passing through
Beijing-Shanghai and Shanghai-Nanjing High Speed Rail passing through



Your Partner to Success

Expo Plaza, Xiandai Avenue, Suzhou Industry Park,
Suzhou, Jiang Su Province, P.R. China.
苏州工业园区现代大道博览广场

www.suzhouexpo.com



苏州经典园林一日游

游览1: 狮子林 姑苏水上游 寒山寺 虎丘 北寺塔

游览2: 拙政园 姑苏水上游 寒山寺 虎丘 北寺塔

电话咨询有优惠价



虎丘景区

吴中第一名胜
到苏州不玩虎丘乃憾事也。



狮子林

建于元代,即1342年,
乾隆六下江南,五进
狮子林游玩。



拙政园

拙政园始建于明正德四年,
为明代弘治进士、御
史王献臣弃官回乡后,在
唐代陆龟蒙宅地和元代大
弘寺旧址处拓建而成。



**北寺塔
江南第一宝塔**

北寺塔又叫报恩塔,
是孙权为报答乳母的
养育之恩而建的江南
唯一的一座第一高塔。



姑苏水上游

人站船头,水上走,
千年古街在眼过,小桥
流水河边屋,恰是一江
春水向东流。



寒山寺

寒山寺原名“妙利普
明塔院”建于六朝时期
的梁代天监年间(公元
502-519年)。距今已有
1400多年。

中国康辉苏州国际旅行社有限公司
CHINA COMFORT SUZHOU INTERNATIONAL TRAVEL CO., Ltd

总公司地址: 苏州市人民路2114号
办公电话: 65165114 13151185238 24小时开机
投诉电话: 67548344

www.chinadaily.com.cn

CHINADAILY

中国日报

China Daily Jiangsu Office was established in 2000. In the past eight years, it has made many interviews and reports on a great number of important events, such as Asia-Pacific Economic Cooperation meetings, World Historical & Cultural Cities Expo and a great number of economic and business conferences and forums. In addition, it has also made many reports on the private economy, multinationals, foreign investment, environmental protection and cultural tourism of Jiangsu province. Moreover, it is also in charge of the direct circulation of China Daily within Jiangsu, providing subscription and delivery services for hotels, airports and universities.

Suzhou Tourist Information Center

As an important sign of the international tourist city, the Tourist Information Center for public good provides the citizens and tourists with information about travel, transportation, accommodation, food, shopping, emergency treatment, insurance, security and daily life in Suzhou. The Center, which was established in 2002, now has eight sub-centers all over the downtown of Suzhou. It also shoulders the tasks to build and maintain all versions of official websites for Suzhou tourism and the "12301" hot line for travel in Suzhou. The Center aims at establishing a tourist information service brand relying on its standard management and professional services to guide the travel of the tourists in Suzhou, optimize the tourist service environment, improve the quality of Suzhou as a city featuring cultural tourism, enhance the overall services of the Suzhou tourism and build a good image of Suzhou as an international tourist destination.

