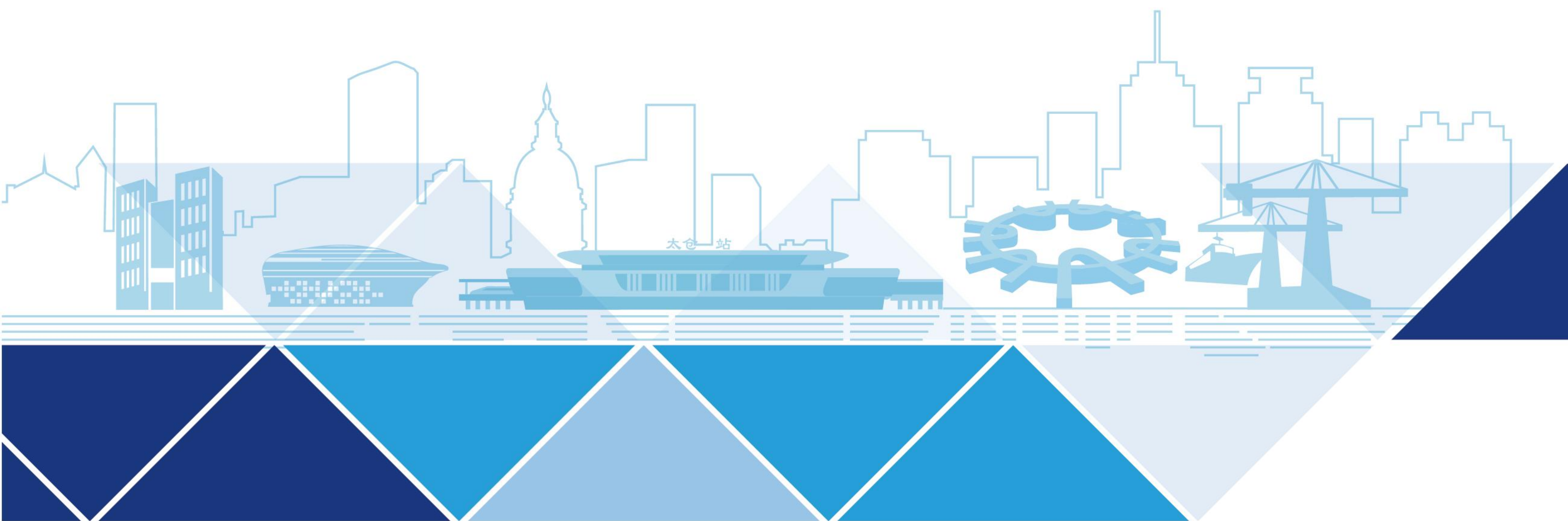


TAICANG INVESTMENT GUIDE

太仓市投资指南



TAICANG INVEST
太仓投资促进



卷首语 PREFACE

太仓，因春秋时期吴王在此设立粮仓而得名，素有锦绣江南金太仓之美誉。元明时期，繁华的海上贸易与漕运，使太仓成为商贾云集的“六国码头”。明代航海家郑和，由此扬帆七下西洋。

生活工作在这里是幸福的。漫步沙溪古镇小桥流水，领略长江入海的大气磅礴。事业发展在这里是充满无限可能的。长三角枢纽城链接全球，积淀深厚的产业基础加速蝶变。

翻开这本册子，带您品味“现代田园城，幸福金太仓”的独特意蕴。

In Chinese, Taicang means a place where an imperial granary was built under the instructions of the king of the Wu Kingdom during the Spring and Autumn period (approximately from 770 to 476 BC). It has been hailed as the “golden Taicang in the beautiful regions south of the Yangtze River”. During the Yuan and Ming dynasties (1271 to 1644), flourishing maritime trade and efficient water transport made Taicang the “dock of six kingdoms”, attracting numerous merchants. Zheng He, a great Chinese navigator who lived in the Ming Dynasty, embarked on his seven voyages to the western seas from the city.

It is fulfilling to live and work here: taking a walk around the Shaxi Ancient Town with small bridges across bubbling streams, enjoying the splendor and magnificence of the Yangtze River joining the sea. Career development here is filled with unlimited possibilities. As a hub city in the Yangtze River Delta, Taicang connects the globe, and its profound industrial foundation is accelerating transformation. Enjoy a wonderful tour around the amazing city in the following pages.

TAICANG CITY

太仓市

太仓位于江苏省东南部，地处长江三角洲冲积平原，长江口南岸，全境地势平坦，属北亚热带南部湿润气候区，四季分明，气候温和。

太仓已有4500多年的历史，自古就是重要的港口和商埠。太仓市域面积810平方公里，总人口约103万，拥有国家级经济技术开发区、省级高新区、国家一类口岸太仓港、国家级太仓港综合保税区。

Taicang is located in the southeastern part of Jiangsu Province, situated in the alluvial plain of the Yangtze River Delta and the south bank of the Yangtze River estuary. The whole territory is flat within the northern subtropical southern humid climate zone. The four seasons are clear with mild climate.

Taicang has a history of more than 4,500 years and has been an important harbor and commercial port. Taicang city covers an area of 810 square kilometers, with a total population of about 1.03 million. Taicang city has a state-level economic and technological development zone, a provincial level hi-tech zone, a state-level port Taicang Port and Taicang Port Comprehensive Bonded Zone.



THE CITY'S HONORS

城市荣誉

-  中国县域高质量发展百强第六位
Ranked 6th in China's Top 100 County-level Cities for High-Quality Development
-  全国科技创新百强县市第二位
Ranked 2nd in China's Top 100 County-level Cities for Science and Technology Innovation
-  福布斯中国大陆最佳县级城市
Forbes Best County-level City in Mainland China
-  中德企业合作基地
Sino-German Enterprise Cooperation Base
-  中欧(太仓)绿色数字创新合作区
China-Europe (Taicang) Green Digital Innovation Cooperation Zone
-  中国最具幸福感城市县级市榜首
Happiest County-level City in China
-  全国文明城市
National Civilized City
-  国家生态园林城市
National Ecological Garden City
-  中国长寿之乡、人居环境奖
China Longevity Hometown and Living Environment Award



KEY STATS

重要数据

1935 亿元
193.5 billion yuan

2025年地区生产总值
GDP in 2025

1,800+

外资企业
Foreign-invested enterprises

560+

德资企业
German enterprises

12,000+

工业企业
Industrial enterprises

40+

世界500强企业
Fortune global 500 enterprises

182

国家和地区经贸往来
Established trade and economic relations with countries and regions



06

交通区位

Geographic Location

10

产业体系

Industrial System

24

载体平台

Industrial Platform and Facilities

32

要素保障

Industrial Development Utilities

目录
CONTENTS

GEOGRAPHIC LOCATION

交通区位

区位优势 FAVORABLE GEOGRAPHIC LOCATION

太仓市位于“一带一路”、沿海开放带和长江经济带交汇点、长三角一体化核心都市圈内，是距离上海市中心最近的县级城市。

Taicang is located at the intersection of "One Belt, One Road", Coastal Open Belt and Yangtze River Economic Belt, and within the core metropolitan area of the Yangtze River Delta Integration and is the closest county-level city to downtown Shanghai.

01 居于长三角一体化发展的最佳“C位”

The best position in the integrated development of the Yangtze River Delta

02 沪苏同城：虹桥国际开放枢纽北向拓展带重要节点城市

Urban Integration of Shanghai and Suzhou: Important Node City of Hongqiao International Development Hub's Northward Expansion Belt

03 处于上海“半小时通勤圈”

Less than half hour drive to downtown Shanghai

04 26分钟可达上海虹桥

26 minutes' drive to Shanghai Hongqiao



国际机场

INTERNATIONAL AIRPORTS

上海虹桥国际机场 车程0.5小时
Shanghai Hongqiao International Airport (0.5 hour by car)

上海浦东国际机场 车程1.5小时
Shanghai Pudong International Airport (1.5 hours by car)

交通体系

TRANSPORTATION SYSTEMS

轨道交通5+1

5+1 RAILWAY LINES

沪苏通铁路一期
Shanghai-Suzhou-Nantong Railway Phase I

沪苏通铁路二期
Shanghai-Suzhou-Nantong Railway Phase II

沪宁沿江高铁
Shanghai-Nanjing Intercity Railway

北沿江铁路
North Yangtze Intercity Railway

苏锡常城际铁路
Suzhou-Wuxi-Changzhou Intercity Railway

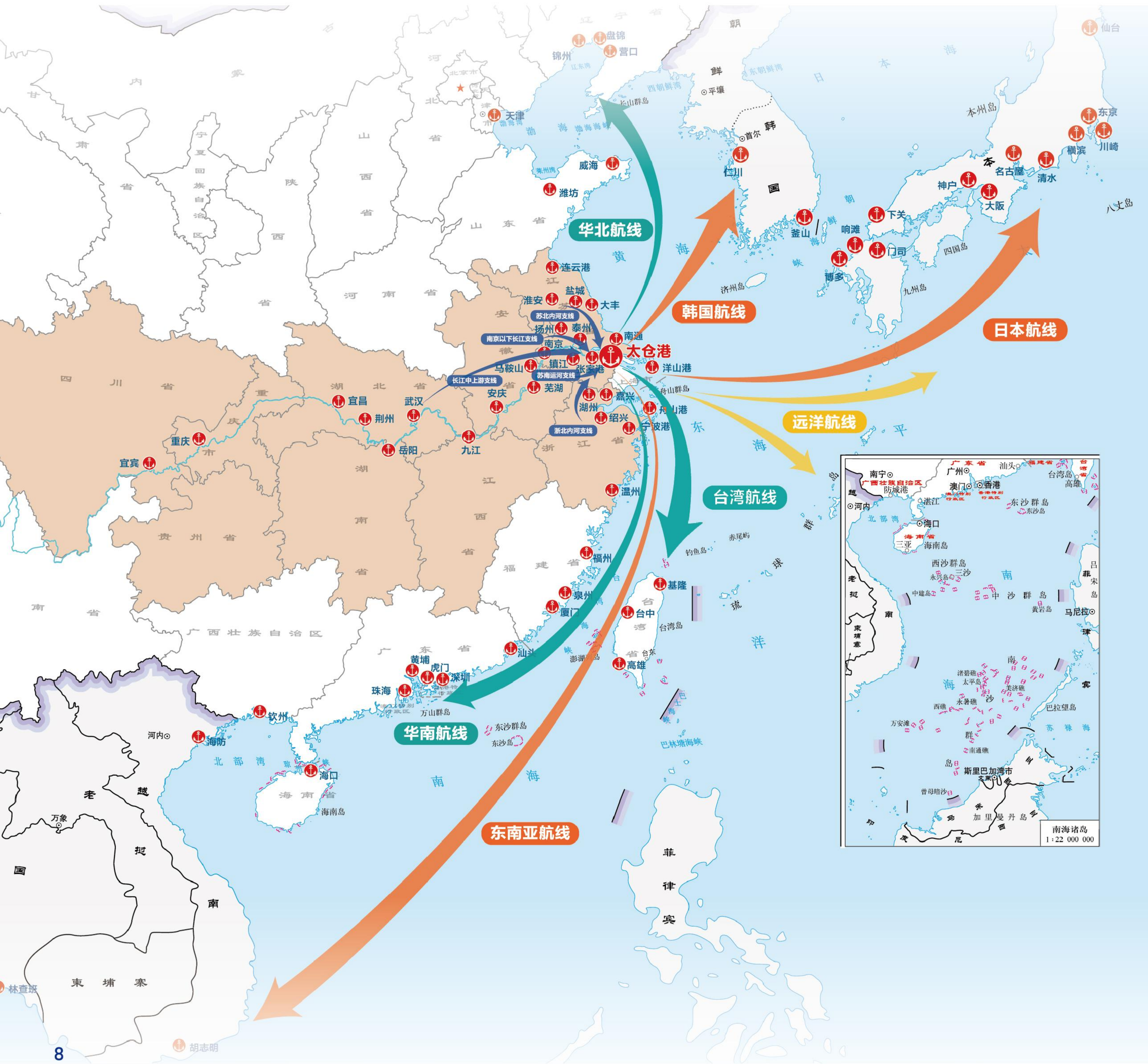
闵嘉太线
Minhang-Jiading-Taicang Line

公路交通

HIGHWAY TRAFFIC

高速公路 G15、S48、S80
Expressways

国道和省道 G346、G204、S339、S224
National and Provincial Highways



太仓港 TAICANG PORT

🏠 长江第一大港、江苏第一大港
The largest port on the Yangtze River and in Jiangsu Province

🏠 与上海洋山港实现沪太通关一体化
One stop customs clearance between Shanghai Yangshan Port and Taicang Port

🏠 “远洋中转、近洋直达、沿海内贸、长江集并、内河喂给” 5张航线网络
5 shipping-routes network: Ocean transfer, Nonstop to near-sea, Coastal domestic trade, Container consolidation on Yangtze River, Feeding to inland river

🏠 集装箱年吞吐量已超过800万标箱
Container throughput per year over 8 million TEUs

🏠 全国集装箱港口第8位、全球第20位
8th in China, 20th in the world's top 100 container ports



INDUSTRIAL SYSTEM

产业体系



太仓市产业概况

OVERVIEW OF INDUSTRIES

太仓市工业发展历史悠久，外资与民营、龙头企业与中小企业相融共生，构建“3+3+X”高质量现代产业体系。

Taicang City has a long history of industrial development, with foreign-invested and private enterprises, leading enterprises and SMEs integrated and coexisting, creating a "3+3+X" high-quality modern industrial system.

主导产业集群

Leading Industrial Clusters

- 高端装备 High-end Equipment
- 先进材料 Advanced Materials
- 现代物贸 Modern Logistics & Trade

特色产业集群

Specialized Industrial Clusters

- 航空航天 Aerospace
- 医药健康 Pharmaceutical & Healthcare
- 文旅商服 Cultural Tourism & Commercial Services

未来产业集群

Future Industrial Clusters

- 具身智能 Embodied Intelligence
- 新型储能 New Energy Storage

HIGH-END | 高端装备 EQUIPMENT

3+3+X

依托对外开放优势，太仓形成了高精密数控机床、新能源装备、汽车核心零部件等产业为主的高端装备制造产业集群。已集聚规上高端装备企业近550家，产值超1500亿元。

Taicang relies on the advantage of fully open to the world and the foreign investment. It has created a high-end equipment manufacturing cluster specializing in high-precision CNC machine tools, new-energy equipment, and core automotive parts and components. Near 550 high-end equipment enterprises above designated size have settled in Taicang, achieving an output value of over 150 billion yuan.

70%汽车零部件“太仓造” 70% AUTO PARTS “MADE IN TAICANG”

传统汽车核心零部件

Traditional Automotive Core Components

发动机动力系统 Engine Power System SCHAEFFLER brose PREMAN CWB OILEDWHEEL KFS MATIKON 睿昕	传动系统 Driveline System BorgWarner häring SCHAEFFLER Mubea Valeo NOK-FREUDENBERG BRUSS	底盘系统 Chassis System OECHSLER IMS:GEAR HST HWASEUNG BJF 保捷集团 HONGM Z
---	---	---

新能源汽车核心零部件

New Energy Vehicle Core Components

电驱系统 Electric Drive System UAES SCHAEFFLER BorgWarner OILEDWHEEL FEINTOOL MAHLE BKL BRAND KERN-LIEBERS	电控系统 Electronic Control System Zollner FICOSA CWB CASTING VASD 苏州扬信汽车零部件有限公司 HE 恒科电子 IMS:GEAR FM	电池系统 Battery System TL SCIENCE 天沃智能 SIK BRAND NEW FUTURE STRAMAMPS HA-BE Hydro 华一 HUAYI WUUSHIANG DERAtech
--	--	--

德国前十机床企业有6家在太仓落户

SIX OF GERMANY'S TOP TEN MACHINE TOOL COMPANIES HAVE SETTLED MANUFACTURE BASE IN TAICANG



ADVANCED | 先进材料 MATERIALS

3+3+X

近年来，太仓市高度重视先进材料产业创新集群发展，重点瞄准先进材料领域关键技术的研发与突破，形成了专用石化、高分子、金属材料、特种功能纤维等先进材料产业集群，已集聚产业链规上企业超450家，产值超1000亿元。

In recent years, Taicang has placed great emphasis on the development of innovative clusters in the advanced materials industry. With a strategic focus on the R&D and breakthroughs in key technologies within this sector, a new cluster comprising specialized petrochemicals, polymers, metal material, special-purpose fibers and other advanced material industries are emerging. Taicang has gathered more than 450 enterprises above designated size in the industrial chain, achieving an output value over 100 billion yuan.

新材料 NEW MATERIAL



亚太地区最大的 高端润滑油产业集群

THE LARGEST HIGH-END LUBRICANT CLUSTER IN THE ASIA-PACIFIC REGION



科研院所 SCIENTIFIC & RESEARCH INSTITUTION



MODERN | 现代物贸 LOGISTICS & TRADE

3+3+X

依托太仓港“江尾海头第一港”优势，太仓以加快建设港口型国家物流枢纽为支点，推动港口流量向经济增量高效转化。现代物贸产业规模突破2000亿元，耐克、斯凯奇等总部项目加速集聚，“建总仓、到太仓”名片持续擦亮。

Leveraging the advantage of Taicang Port as the "key port connecting river and sea", Taicang is accelerating the construction of a national port-type logistics hub, using it as a pivot to efficiently transform port throughput into economic growth. The scale of modern logistics and trade industry has exceeded 200 billion yuan, with headquarters projects of Nike and Skechers and other enterprises rapidly clustering, continuously enhancing the reputation of "Choose Taicang for headquarters warehousing."

总部经济 HEADQUARTERS ECONOMY



港航物流 PORT AND SHIPPING LOGISTICS



分拨配送 DISTRIBUTION LOGISTICS



大宗商品交易 COMMODITY TRADING



3+3+X

AEROSPACE | 航空航天

太仓市依托西北工业大学太仓长三角研究院在航空航天领域中的全方位优势、上海发展大飞机产业的溢出效应，以及超 30 年对德合作形成的精密制造产业基础，全方位推动航空航天产业高质量发展。当前，太仓紧盯航空关键零部件、航空新材料、机载系统等产业领域加速项目招引，积极参与上海大飞机产业体系建设，已集聚航空航天产业链企业超 200 家，实现产值超 240 亿元。

Relying on the all-round advantages of Yangtze River Delta Research Institute of Northwestern Polytechnical University in the aerospace field, the radiation spillover effect of Shanghai's development of the large aircraft industry, as well as the precision manufacturing industry foundation formed by cooperation with Germany over 30 years, Taicang has comprehensively promoted the high-quality development of the aerospace industry in an all-round way. At present, Taicang focuses on aviation key components, aviation new materials, airborne systems and other industrial fields to promote projects, actively participates in the development of Shanghai's large aircraft industry system, has gathered more than 200 enterprises in the aerospace industry chain, and the annual output value reached 24 billion yuan.

航空核心零部件 Aviation Core Parts



航空配套装备 Aviation Supporting Equipment



航空机载系统 Aviation Airborne Systems



商业航天 Commercial Spaceflight



航空新材料 Aviation New Materials

通用航空 General Aviation

航空服务业 Aviation Service

3+3+X

PHARMACEUTICAL & HEALTHCARE | 医药健康

抢抓生物医药产业崛起的战略机遇，太仓聚焦生物医药细分产业，重点布局医药服务外包、生物创新药、高端医疗器械及体外诊断、美妆医美等领域，构建了“一园两翼”的发展格局，建成GMP标准厂房近300万平方米，储备预留土地4200亩，建设6平方公里的太仓药谷，已集聚产业链企业720多家，年营业收入超350亿元。

Seizing the strategic opportunities arising from the booming biomedical sector, Taicang is focusing on the major areas of biomedical industry, namely pharmaceutical service outsourcing, biological innovative drugs, high-end medical devices and IVD, cosmetic medicine. With the development pattern of "one park and two wings", Taicang has built GMP standard factories of nearly 3 million square meters, reserved land of 4,200 Chinese Mu, constructed Taicang Medicine Valley of 6 square kilometers, and gathered more than 720 industrial chain enterprises with an annual revenue of more than 35 billion yuan.

医药服务外包 PHARMACEUTICAL SERVICE OUTSOURCING



生物创新药 BIOLOGICAL INNOVATIVE DRUGS



高端医疗器械及体外诊断 HIGH-END MEDICAL DEVICES AND IVD

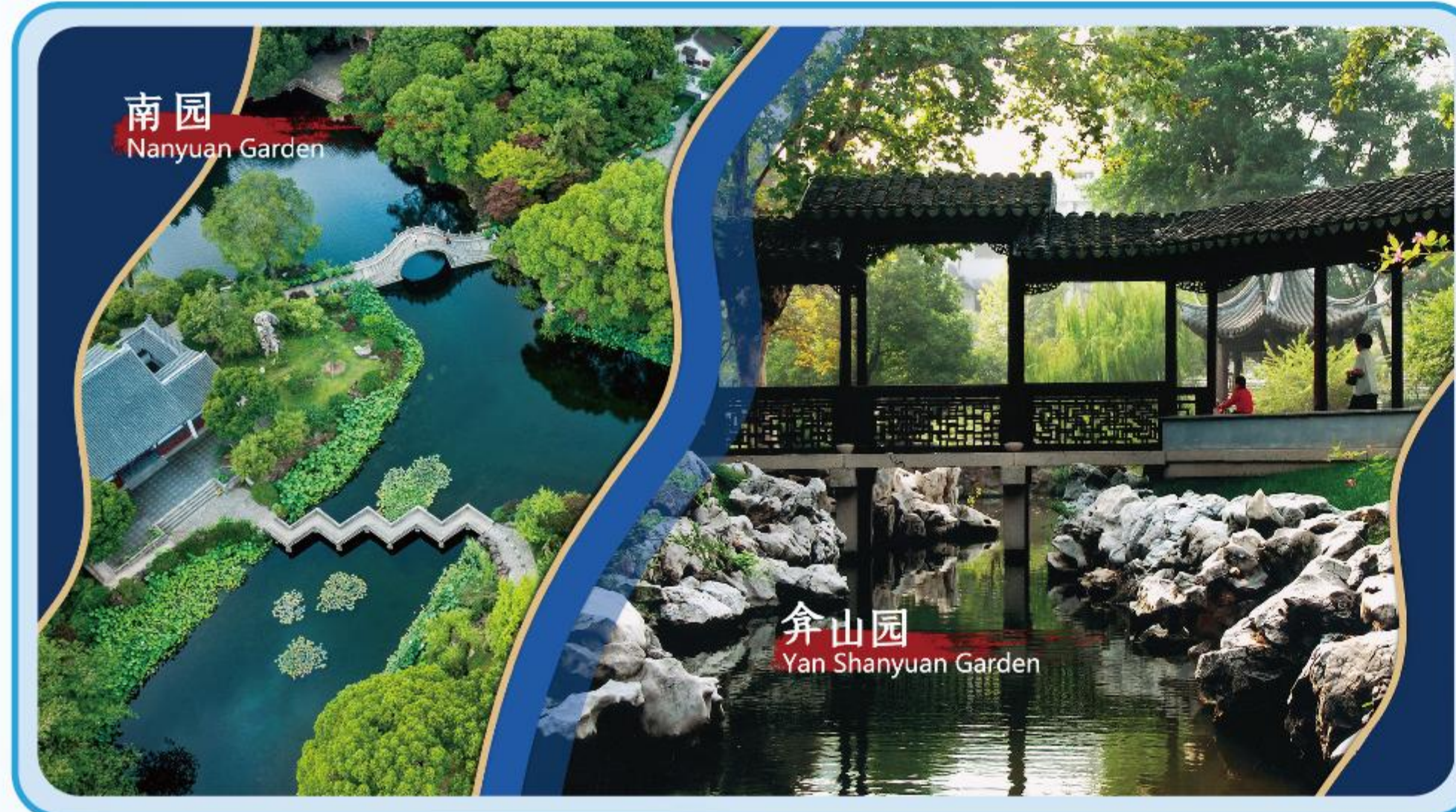


美妆医美 COSMETIC MEDICINE



CULTURAL | 文旅商服
TOURISM & COMMERCIAL SERVICES

3+3+X



EMBODIED | 具身智能
INTELLIGENCE

3+3+X

太仓以企业创新为牵引、以政策载体为支撑、以OPC模式与场景应用为抓手，构建起“技术研发-产业集聚-模式创新-融合应用”的人工智能全链条发展体系。目前，全市已集聚近百家人工智能产业链相关企业，产业规模超150亿元。

Taicang takes enterprise innovation as the driving force, policy support and carriers as the foundation, and the OPC model with scenario application as the key focus, building a full-chain artificial intelligence development system covering "technological R&D, industrial clustering, model innovation and integrated application". At present, nearly 100 enterprises related to the AI industrial chain have gathered in Taicang, with an industrial scale exceeding 15 billion yuan.

机器人核心零部件 KEY COMPONENTS OF ROBOTS



人形机器人领域 HUMANOID ROBOTS

无人驾驶载具 UNMANNED VEHICLES



NEW | 新型储能 ENERGY STORAGE

3+3+X

太仓积极构建智慧储能生态，聚焦氢能、新能源电池等领域，加快新型储能在港口、工业园区、高耗能企业等场景推广应用，推动储能产业规模化发展和区域绿色低碳转型。

Taicang is actively building a smart energy storage ecosystem, focusing on hydrogen energy, new energy batteries and other fields, accelerating the application of new energy storage in scenarios such as ports, industrial parks and energy-intensive enterprises, so as to promote the large-scale development of the energy storage industry and the regional green and low-carbon transformation.

华一新能源 Huayi New Energy

华一锂电池电解液添加剂
HUAYI Lithium Battery Electrolyte Additives



江苏先进无机材料研究院 JRIAIM

先进无机材料应用研究及高新技术成果转化
Research and application of advanced inorganic materials, transformation of high-tech achievements

协鑫 GCL

协鑫储能电站
GCL Energy Storage Station



贲安能源 Benan Energy

钠离子电池
Sodium-ion battery

碳什科技 CarbonX Technology

新能源材料、电池材料、碳基纳米材料
New energy materials, battery materials, carbon nano-materials



宁德时代 CATL

宁德时代新能源重卡换电站
CATL's Heavy-Duty EV Swap Station

FINANCIAL | 金融支持 SUPPORT

基金 + 服务 Funds + Services

- 投资基金超**100**支
Invested in more than 100 funds
- 合作规模突破**1700**亿元
Cooperative scale exceeding 170 billion yuan
- 基金投资项目超**600**个
Invested in over 600 projects
- 管理规模超**100**亿元
Assets Under Management exceeding 10 billion yuan



全层次 FULL-LEVEL

合作纵贯国家级、省级、市级和区镇基金
cooperation spans national, provincial, municipal and district-town funds

全产业 FULL-INDUSTRY

紧扣太仓“3+3+X”产业导向，
实现项目与资本双向奔赴
Focusing on Taicang's "3+3+X" industrial clusters, achieving a two-way convergence between projects and capital

全周期 FULL-CYCLE

“投早、投小、投长期”
Invest early, invest small, invest for the long term
天使引路—创投陪跑—产业资本接力
Angel investment leads, venture capital accompanies, industrial capital escorts

全生态 FULL-ECOSYSTEM

打造金融、人才、数字、建管、物业及政务六大服务平台
Building 6 service platforms of finance, talent, digitalization, construction management, property and government services

INDUSTRIAL GREEN AND LOW CARBON "TAICANG MODEL"

工业绿色低碳“太仓模式”

在双碳目标背景下，太仓以工业绿色低碳发展为核心，依托中欧碳中和项目合作坚实基础，积极打造工业绿色低碳合作发展“太仓模式”。正式启动中欧（太仓）绿色数字创新合作区碳中和试点项目，将把欧洲绿色低碳领域先进技术、经验与中国大市场相结合，探索零碳园区建设标准及碳中和路径。

Against the background of the carbon peaking and carbon neutrality goals, Taicang has taken industrial green and low-carbon development as its core, relying on the solid foundation of the Sino-European Carbon Neutral Project, and is actively building the "Taicang Model" of industrial green and low-carbon cooperation and development. The official launch of the Sino-European (Taicang) Green Digital Innovation Cooperation Zone Carbon Neutral Pilot Project will combine European advanced technology and experience in the field of green and low carbon with China's large market, explore the construction standards of zero-carbon parks and the path of carbon neutrality.



耐克绿色物流中心
Nike Green Logistics Center



宝洁灯塔工厂
P&G Lighthouse Factory



和路雪冰淇淋工厂
Wall's Ice Cream Factory

SINO-GERMAN COOPERATION | 中德合作

1993年，第一家德资企业克恩-里伯斯来到太仓，由此拉开太仓深耕对德合作的序幕。时至今日，太仓已聚集德企超560家，成为中国德企投资最密集、发展最好的地区之一。

In 1993, the first German-funded enterprise KERN-LIEBERS came to Taicang, which started Taicang's in-depth cooperation with Germany. Today, Taicang has gathered more than 560 German enterprises, become one of the regions with the most intensive investment and highest development degree of German enterprises in China.

聚集德企业超 **560** 家
More Than 560 German Companies

60 多家世界“隐形冠军”企业
More Than 60 Global "Hidden Champion" Enterprises

项目总投资额超 **60** 亿美元
Total Project Investment Exceeds USD 6 Billion

随着德企发展不断融入太仓本土，产业链日趋完善。聚集在太仓的德国企业以精密制造为主，其中包括60多家世界“隐形冠军”企业，德资项目总投资额超60亿美元，90%以上早期落户德企完成首轮乃至三轮以上增资扩产，带动800余家本土企业协作配套，一批德企在太建立研发中心和区域总部。

As the German enterprises continue to develop in Taicang integrately, the industrial chain matures increasingly. Most German enterprises in Taicang are in the precision manufacturing industry, including over 60 global "Hidden Champion" enterprises. The total investment of German-funded projects exceeds 6 billion USD. Over 90% of the early settled German enterprises have completed the first round or even three rounds of the capital increment and production expansion, driving more than 800 local private enterprises to carry out in-depth cooperation in the industry chain. Many German enterprises established R&D centers and regional headquarters in Taicang.

对德合作荣誉 HONOR FOR COOPERATION WITH GERMAN ENTERPRISES

30多年来,太仓开辟出一条以产业合作为基础、以职业教育为亮点、以文体交流为媒介、以科技创新为动力,具有鲜明特色的对德合作之路。建成德国中心等对德合作载体超100万平方米,国内首个双元制培训中心在此成立,太仓案例、太仓声音频频现身中德两国高层级交流对话,打造了20多项对德合作的全国第一和唯一,树立起中德双边务实合作的典范。

Over the past 30 years, Taicang has opened up a road of cooperation with Germany with distinctive characteristics, industrial cooperation as foundation, vocational education as the highlight, cultural and sports exchanges as the medium, and scientific and technological innovation as the driving force. Like the German Center, more than 1 million square meters facilities for German cooperation have been built, and the first dual-system training center in China was established here. Taicang's successful cases and Taicang's voice frequently appear in the high-level exchanges and dialogues between China and Germany. Taicang created more than 20 Sino-German cooperation records, some are first record or the only one record in China, built the model of Sino-German bilateral practical cooperation.



对德合作历程 HISTORY OF SINO-GERMAN COOPERATION

1993

1993年**首家**德国企业克恩-里波斯弹簧有限公司落户。
Kern-Liebers became the **1st** German enterprise to invest in Taicang in 1993.

1995

1995年舍弗勒落户,后成为太仓市规模最大的德国企业。
Schaeffler invested in Taicang in 1995. Now it is the largest German enterprise in the city.

2000

2000年,德商会在太仓设立德中工商技术咨询服务(太仓)有限公司。
German Chamber of Commerce Greater China established the German Industry and Commerce(Taicang) Co., Ltd. in 2000.

2007

2007年**第100家**德国企业艾巴赫弹簧(太仓)有限公司落户。
Eilbach Springs (Taicang) Ltd. started operations in 2007, marking the **100th** German enterprise to invest in the city.

2008

2008年中国商务部和德国经济技术部共同授予太仓中德企业合作基地。
Taicang was designated as the Center for Sino-German Enterprises Cooperation Base by the Chinese Ministry of Commerce and the German Ministry of Economy and Technology in 2008.

2016

2016年全球第六家、中国第三家德国中心在太仓投运。
In 2016, the world's 6th and China's 3rd German Centre for Industry and Trade opened in Taicang.

2018

2018年德福埃斯成为**第300家**德国企业。
DVS-Technology became the **300th** German brand to invest in Taicang in 2018.

2021

2021年艾威昂成为**第400家**德国企业。
Ahwion became the **400th** German enterprise to invest in Taicang in 2021.

2024

2024年伯曼集团成为**第500家**德国企业。
Beumer Group became the **500th** German brand in 2024.

2026 德国总理默茨访华期间,3个太仓对德合作项目入选国家级合作清单:

- 舍弗勒再度加码太仓,打造人形机器人数字化工厂
- 太仓高新区与德国国际合作机构(GIZ)签约共建中德太仓零碳园区
- 太仓与德国莱茵内卡大区签约共建太仓莱茵内卡创新中心

During German Chancellor Friedrich Merz's visit to China in 2026, three Taicang-Germany cooperation projects were included in the national-level cooperation list:

- Schaeffler increased its investment in Taicang to build a humanoid robot smart digital factory.
- Taicang High-tech Zone signed a contract with GIZ to jointly build Taicang Sino-German Zero-Carbon Park.
- Taicang signed an agreement with the Rhein-Neckar Region to jointly establish the Taicang Rhein-Neckar Innovation Center.

INDUSTRIAL PLATFORM AND FACILITIES

载体平台

太仓港经济技术开发区

TAICANG PORT ECONOMIC AND TECHNOLOGICAL
DEVELOPMENT ZONE

太仓港经济技术开发区成立于1993年，2011年晋升为国家级开发区，陆域规划控制面积261.8平方公里。开发区拥有沿长江入海口38.8公里的黄金深水岸线，是长三角重要沿江临沪产业基地和港口型国家物流枢纽。开发区构建“3+2+1”的现代化产业体系，持续做强临江智能制造、现代物贸产业，通过强化高端装备、先进材料、健康医药三大主导产业延链，加快新能源汽车及其关键零部件和航空航天等先导产业建链，突出现代物贸特色产业聚链。现已成为全球最大的集装箱制造基地、亚洲最大的高级润滑油生产基地和中国知名的健康护理产品生产基地、物流贸易基地。

Taicang Port Economic and Technological Development Zone (TPEDZ) was established in 1993 and upgraded to a state-level development zone in 2011, with a land area of 261.8 square kilometers. The zone has 38.8 kilometers of prime deep-water coastline along the Yangtze River at the mouth of the sea, and is an important industrial base along the Yangtze River and a port-type national logistics hub. The development zone builds a modernized industrial system of "3+2+1", continuously strengthens the intelligent manufacturing and modern trade industry along the Yangtze River, extends the industries chain by strengthening the three leading industries of high-end equipment, advanced materials and health medicines, accelerates the buildup of the industries chain of new energy automobile and its key parts, aerospace and other pilot industries, and highlight the characteristics of modern goods and trade industrial chain. It has now become the world's largest container manufacturing base, Asia's largest high-grade lubricant production base and China's well-known health care product production base, logistics trade base.

四大国家级平台:开发 区、综合保税区、一类口 岸、物流枢纽

Four national industrial parks/hubs:
A national development zone, a
national comprehensive bonded zone,
a national first-class port, a national
logistics and shipping hub

沿江先进制造基地

An advanced manufacturing base
along the Yangtze River

临港现代物贸园区

A modern logistics and trade
park at Taicang Port

滨江新兴港口城市

An emerging port city
along the Yangtze

国家高新 技术产业化基地

National High-tech
Industrialization Base

国家先进制造 技术国际创新园

National Advanced Manufacturing
Technology International
Innovation Park

国家新型工业化 产业示范基地

National New Industrialization
Industry Demonstration Base

中德智能制造 合作示范园区

Sino-German Intelligent
Manufacturing Cooperation
Demonstration Park

太仓高新技术产业开发区

TAICANG HIGH-TECH INDUSTRIAL DEVELOPMENT ZONE

太仓高新区成立于1993年，地处太仓市主城区，南与上海宝山、嘉定接壤，到虹桥枢纽17分钟，是距离上海最近的高新区，已成为深度融入上海大都市圈的最前沿和主阵地。区域总面积116平方公里，按照“一区四核”的空间格局设计，即中部中央高端商务区、北部中德创新产业园、南部文旅创意片区、东部娄江新城。高新区聚焦新能源汽车核心零部件、航空航天、高端装备制造三大产业，大力发展实体经济，已聚集外资企业超900家。

Taicang High-tech Zone established in 1993, and located in the city center of Taicang, the southern part of the zone borders with Baoshan and Jiading of Shanghai, and it just takes 17 minutes to Shanghai Hongqiao transportation Hub, which is the nearest high-tech zone to Shanghai, and it has become the forefront and the main position of deep integration into the Shanghai metropolitan circle. The zone covers a total area of 116 square kilometers, which is designed according to the spatial pattern of "one district and four core districts areas", the High-end business District in the center, the Sino-German Innovation Industrial Park in the north, the Cultural and Tourism creative area in the south, and the Loujiang New Town in the east. The High-tech Zone focuses on the three major industries of core components of new energy vehicles, aerospace and high-end equipment manufacturing, and vigorously develops the real economy. It has gathered more than 900 foreign-funded enterprises.

城厢镇

Chengxiang Town

城厢镇位于太仓市域西南部,连续多年获评中国百强镇,先后荣获全国文明镇、中国民间文化艺术之乡等称号。城厢镇充分发挥地处长三角核心区优势,全力提升太仓市科技产业园建设水平。依托嘉昆太汽车装备产业社区和嘉昆太数智装备产业园,大力发展**载运智造、先进材料、新能源三大特色产业**,加快推动产业转型升级,助力长三角一体化高水平协同发展。

Located in the southwestern Taicang, Chengxiang Town is widely known as one of the Top 100 Chinese Towns, and won many titles such as National Culturally Advanced Town, Home of Folk Culture and Art in China. The town fully leverages its advantages in the core area of the Yangtze River Delta, and strives to enhance the construction level of Taicang Science and Technology Industrial Park. Relying on the Jiading-Kunshan-Taicang auto equipment industry community and Jiading-Kunshan-Taicang Digital Intelligence Equipment Industrial Park, the town is making great efforts to develop transporting intelligent manufacturing, advanced materials and new energy industries. Meanwhile, it is sparing no efforts to enhance industrial transformation and upgrading to help the YRD integrated high-level coordinated development.



沙溪镇

Shaxi Town

沙溪镇位于太仓市的中北部,是中国新舞蹈艺术奠基人吴晓邦的故乡,中国历史文化名镇。先后获得国家卫生镇、国家园林城镇、全国特色景观旅游名镇等多项荣誉,位列中国高质量发展百强镇第89位、中国乡镇综合竞争力百强第91位、全国综合实力千强镇第100位。辖区内打造**生物医药产业园、岳王科技创新产业园、新材料产业园三大新兴产业园**。

Located in the north central parts of Taicang, Shaxi Town is the home of Wu Xiaobang, founder of the new dancing art of China, and also Famous Historic and Cultural Town of China. The town has won many honors such as National Health Town, National Garden Town, National Famous Tourism Towns with Special Views, ranking 89th in China's top 100 towns with high-quality development, 91st in China's top 100 towns with comprehensive competitiveness, and 100th in the country's top 1000 towns with comprehensive strength. Three emerging industrial parks, namely, Bio-medicine Industrial Park, Yuewang Science and Technology Innovation Industrial Park and New Material Industrial Park, have been built in the town.



浏河镇 (长江口旅游度假区)

Liuhe Town (Yangtze River Estuary Tourism Resort)

浏河镇(长江口旅游度假区)地处长江之滨,毗邻上海宝山、嘉定两区,是唯一一个沿江临沪的全国重点镇,被誉为“江尾海头第一镇”。获评江苏省历史文化名镇、江苏省文明镇等称号。浏河镇坚持高质量发展路径,形成以**高端装备、汽车零部件、新材料为主的工业体系**。同时,浏河镇着力打造集江南古镇水乡、三鲜美食、江海文化特色资源等为一体的全域旅游目的地。

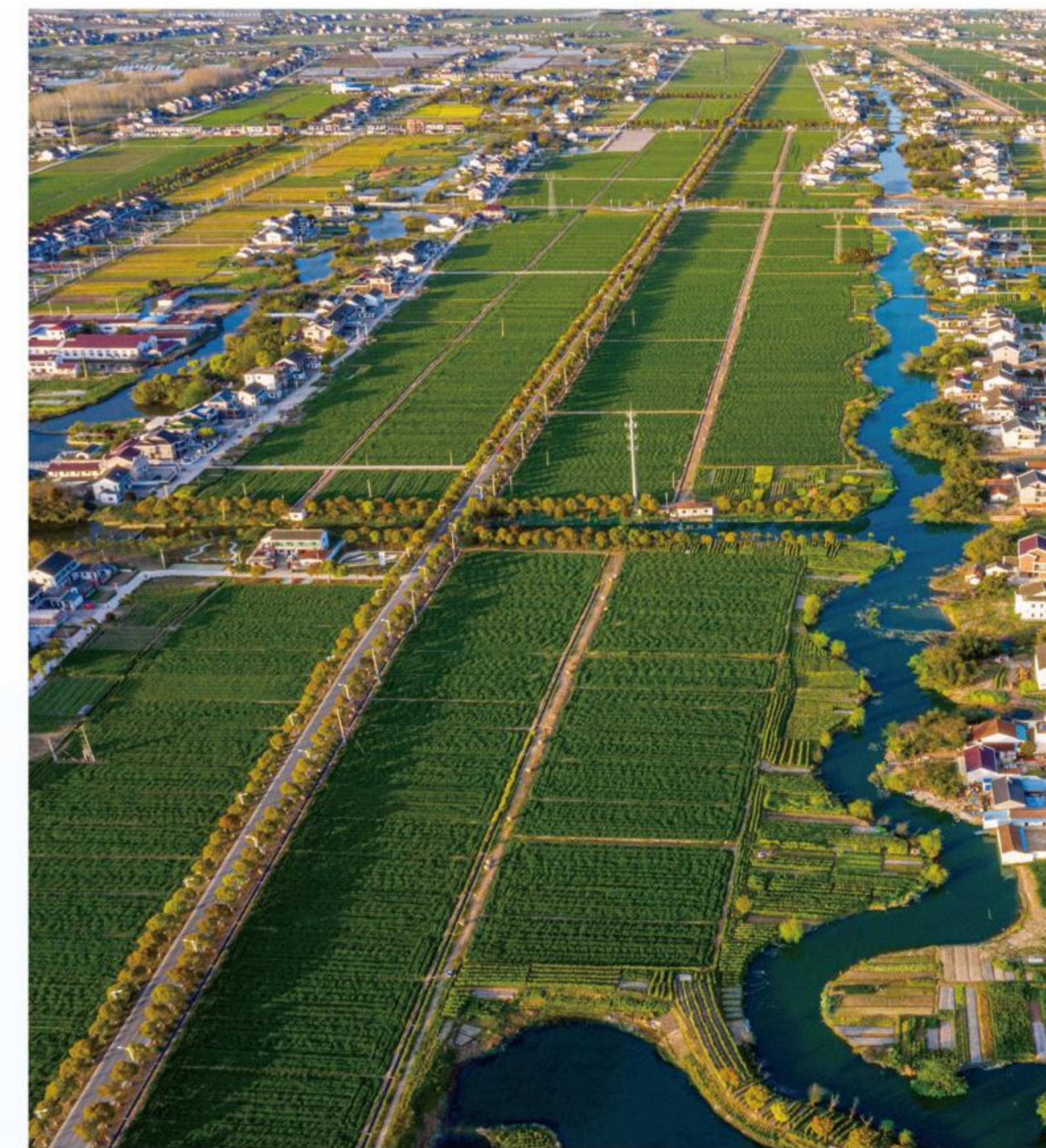
Liuhe Town (Yangtze River Estuary Tourism Resort) is located on the bank of the Yangtze River, adjacent to Shanghai Baoshan and Jiading district, which is the only national key town both along the river and near Shanghai, and known as "the first town at the end of the river and the head of the sea". It was awarded the titles of Historical and Cultural Town in Jiangsu Province and Civilized Town in Jiangsu Province. Liuhe Town adheres to the high-quality development path and forms the industrial system based on high-end equipment, auto parts and new materials. Meanwhile, the town strives to build a comprehensive tourism destination integrating ancient water town, aquatic fresh foods, river and sea cultural characteristics resources.

璜泾镇

Huangjing Town

璜泾镇位于太仓市东北部,获评中国产业集群经济示范镇、中国县域产业集群竞争力100强等荣誉称号。璜泾镇已形成**高端装备制造、汽车零部件、新材料**等多条重点产业链,计划打造集超算中心、大数据孵化基地、半导体集成电路等于一体的“**数字+智造**”产业集群。同时,璜泾镇农文旅融合发展已形成规模,获评省五星级乡村旅游区。

Located in northeastern Taicang, Huangjing Town has won many honors such as China Industrial Cluster Economy Demonstration Town, Top 100 Competitive County-level Industrial Clusters. The town has formed multiple key industrial chains including high-end equipment manufacturing, auto parts and new materials. The town is planning to build a "digital+intelligent manufacturing" industrial cluster integrating super-computing center, big data incubation base and semiconductor. The integration of agriculture with tourism has taken shape, which has enabled the town to be recognized as Three-Star Countryside Tourist Destination of Jiangsu Province.



双凤镇

Shuangfeng Town

双凤镇位于太仓西部,是中国民间文化艺术之乡、中国羊肉美食之乡,荣获国家卫生镇、全国环境优美乡镇等荣誉称号。双凤镇重点发展**高端装备、新材料、新一代信息技术以及绿色食品和生命健康等四个产业**。近年,辖区内打造凤芯光通信和新一代信息技术产业园以及凤擎新能源汽车装备产业园两大特色产业园。

Located in the west of Taicang, Shuangfeng Town is the Home of China's Folk Arts, Hometown of Chinese Lamb food, and has won many honorary titles like National Health Town, National Town with Beautiful Environment. The town focuses on the development of high-end equipment, new materials, new generation of information technology as well as green food and life and health industries. In recent years, Fengxin Optical Communication and New Generation of IT Industrial Park and Fengqing NEVs Industrial Park have been built in the area.



INDUSTRIAL PLATFORM AND FACILITIES

载体平台



智能制造 Intelligent Manufacturing

1. 太仓港欧美高新技术产业园二期
Taicang Port European and American High-tech Industrial Park Phase II
2. 昆太协同数字经济产业园
Digital Economy Industrial Park
3. 平谦现代产业园三期
Plainvim Taicang Modern Industrial Park Phase III
4. 中新智地(太仓)璜泾智能制造产业园
Zhongxin Zhidi (Taicang) Huangjing Intelligent Manufacturing Industrial Park
5. 浏河滨江兴业港
Liuhe Intelligent Manufacturing Park
6. 双辰科创谷
Shuangchen Science and Technology Innovation Park
7. 长三角未来科技产业社区
Yangtze River Delta Future Science and Technology Industry Community

航空航天 Aerospace

8. 中德创新园航空产业园
Sino-German Innovation Park - Aviation Industrial Park
9. 太仓临港航空航天产业园
Taicang Port-Vicinity Aerospace Industrial Park

生物医药 Biomedicine

10. 太仓生物港
Taicang Biobay
11. 中德生命科学园
Sino-German Life and Science Park
12. 太仓星药港
Taicang Medport
13. 七溪生物硅谷
Qixi Bio Valley

科创研发 R&D and Innovation

14. 太仓大学科技园
Taicang University Science Park
15. 德国留学生创业园
The German Students' Pioneer Park
16. 太仓港科技园
Taicang Port Science and Technology Innovation Park
17. 太仓智汇谷科技创新园
Taicang Science and Technology Innovation Park
18. 清华力合未来科技谷
Tsinghua-LH Technology Valley
19. 联达数智集成港
Digital Intelligence Integrated industrial Park

产业载体 INDUSTRIAL PARKS



太仓港欧美高新技术产业园二期

面积: 10.4万m²
Taicang Port European and American High-tech Industrial Park Phase II
104,000m²



昆太协同数字经济产业园

面积: 6.5万m²
Digital Economy Industrial Park
65,000m²



平谦(太仓)现代产业园三期

面积: 17万m²
Digital Economy Industrial Park Phase III
170,000m²



中新智地(太仓)璜泾智能制造产业园

面积: 11万m²
Zhongxin Zhidi (Taicang) Huangjing Intelligent Manufacturing Industrial Park
110,000m²



浏河滨江兴业港

面积: 5.4万m²
Liuhe Intelligent Manufacturing Park
54,000m²



双辰科创谷

面积: 22.7万m²
Shuangchen Science and Technology Innovation Park
227,000m²

新兴产业载体 INDUSTRIAL PARK FOR EMERGING INDUSTRY



中德创新园航空产业园

面积:13.5万 m²
Sino-German Cooperation and Innovation Park- Aviation Industrial Park
135,000m²



联达数智集成港

面积:20万 m²
Digital Intelligence Integrated Industrial Park
200,000m²



太仓生物港

面积:10.4万 m²
Taicang Biobay
104,000m²



中德生命科学园

面积:12万 m²
Sino-German Life and Science Park
120,000m²



太仓星药港

面积:4.5万 m²
Taicang Medport
45,000m²



七溪生物硅谷

面积:22.5万 m²
Qixi Bio Valley
225,000m²

科创载体 SCIENTIFIC AND TECHNOLOGICAL INNOVATION PARKS



太仓智汇谷科技创新园

面积:34.5万 m²
Taicang Science and Technology Innovation Park
345,000m²



长三角未来科技产业社区

面积:10万 m²
Yangtze River Delta Future Science and Technology Industry Community
100,000m²



太仓港科技园

面积:6.5万 m²
Taicang Port Science and Innovation Park
65,000m²



太仓大学科技园

面积:24万 m²
Taicang University Science and Technology Park
240,000m²



清华力合未来科技谷

面积:16.7万 m²
Leaguer Future Technology Valley
167,000m²



德国中小企业(太仓)孵化中心

地址:上海德国中心1号楼709单元
面积:236m², 最多可满足10+德国项目的办公及会客需求
Taicang Incubation Centre for German SMEs
Address: Unit 709, Tower 1 of German Centre Shanghai
Construction area: 236m², can meet the working and meeting needs of more than 10 German projects

INDUSTRIAL DEVELOPMENT UTILITIES

要素保障



高等教育 HIGHER EDUCATION

西北工业大学太仓长三角研究院与智汇港 Taicang Yangtze River Delta Research Institute of Northwestern Polytechnical University and Intelligence Integrated Hub

太仓与西北工业大学合作共建西工大太仓长三角研究院与智汇港, 助推太仓改革创新实践。2021年9月, 首期建设完成并投入使用, 将努力打造成为国际化办学的港湾、高层次人才的中心、科技创新的高地。

Taicang and Northwestern Polytechnical University (NPU) have cooperated to build Taicang NPU Yangtze River Delta Research Institute and Intelligence Integrated Hub to boost Taicang's reform and innovation practice. In September 2021, the first phase of the hub construction was completed and put into use, and it will strive to become a harbor for internationalized schooling, a center for high-level talents, and a highland for scientific and technological innovation.

西交利物浦大学太仓校区 Xijiao Liverpool University Taicang Campus

西交利物浦大学太仓校区已于2022年9月启用, 校园占地546亩, 开设7个学院, 7个本科专业, 与企业联合办学。西浦太仓校区主要培养具备人工智能和机器人领域的专业技能的科技类毕业生。

The Xi'an Jiaotong-Liverpool University Taicang Campus started operation in September 2022, the campus covers a land area of 90 acres. The University will have 7 schools offering 7 undergraduate programs in partnership with enterprises, with a focus on AI and robotics.

人工智能与先进计算学院
School of AI and Advanced Computing

智能机器人学院
School of Robotics

智造生态学院
School of Intelligent Manufacturing Ecosystem

产金融合学院
School of Intelligent Finance and Business

文化科技学院
School of Cultural Technology

芯片学院
School of Chips

物联网学院
School of Internet of Things

主要院系

Major Faculties and Departments



职业教育 VOCATIONAL EDUCATION

苏州健雄职业技术学院: 设立智能制造学院、生物医药学院、人工智能学院等院系, 开设机电一体化技术、药品生产技术、软件技术等专业31个, 拥有全日制在校生7000多名, 每年开展职业培训超过6000人次。

Suzhou Chien-Shiung Institute of Technology: It has set up faculties and departments such as Intelligent Manufacturing College, Biomedical College, and Artificial Intelligence College, offering 31 majors such as Mechatronics Technology, Pharmaceutical Manufacturing Technology, Software Technology, etc., with more than 7,000 full-time students, and more than 6,000 vocational trainings every year.

江苏省太仓职业中等专业学校: 设有数控技术、计算机应用、电子信息、交通运输等9个专业群; 拥有全日制在校学生5000多名, 与280多家企业保持着稳定的校企合作。

Jiangsu Taicang Secondary Vocational School: It has 9 professional groups such as numerical control technology, computer application, electronic information, transportation, etc.; it has more than 5,000 full-time students, and maintains stable school-enterprise cooperation with more than 280 enterprises.

双元制教育: 双元制职业教育是指企业和学校合作式的一种职业教育制度, 太仓拥有“双元制”培训机构和项目20余个, 每年培养中高职“工匠型”技能人才3000多人, 形成了从中职、高职到本科的系列化“双元制”职业教育体系。

Dual system of education: dual system vocational education refers to a vocational education system based on cooperation between enterprises and schools. Taicang has more than 20 "dual system" training institutions and programs, which train more than 3,000 "craftsman" skilled talents in secondary and higher vocational colleges every year, forming a series of "dual system" vocational education system from secondary vocational schools, higher vocational schools to undergraduates.

人力资源 HUMAN RESOURCES

工程技术研究中心 **485** 家
485 engineering technology research centers

规上工业企业研发机构建有率 **89%**
The establishment rate of R&D institutions in industrial enterprises above designated size is 89%

国家级人才 **105** 人
105 national-level talents

省“双创人才” **176** 人
176 provincial dual-creative talents

高层次人才 **3.41** 万人
34,100 high-level talents

人才总量 **26.02** 万人
Total talent resources amounted to 260,200 people

生活配套 LIVING FACILITIES

医疗: 太仓市第一人民医院、太仓市中医医院、太仓市娄江新城医院(瑞金医院太仓分院)、上海第九人民医院太仓分院、上海第十人民医院沙溪分院等。

Healthcare: Taicang First People's Hospital, Taicang Hospital of Traditional Chinese Medicine, Taicang Loujiang New City Hospital (Ruijin Hospital Taicang), Taicang Branch of Shanghai Ninth People's Hospital, Shaxi Branch of Shanghai Tenth People's Hospital.



太仓市第一人民医院
Taicang First People's Hospital



太仓市娄江新城医院(瑞金医院太仓分院)
Taicang Loujiang New City Hospital
(Ruijin Hospital Taicang)



人才公寓
Talent Apartments

人才公寓: 太仓深入落实人才乐居工程, 打响“人到太仓就有房”品牌, 推进10000套人才公寓陆续投用。

Talent Apartments: Taicang has deeply implemented the Talent Housing Project, and launched the brand of "Career in Taicang, Housing for Talent". 10,000 talent apartments have been put into use.

国际学校:

- 华顿外国语学校: 从小学、初中到高中的12年一贯制双语国际化学校。
- 上海外国语大学附属太仓学校: 设置4轨小学、6轨初中、4轨高中, 预计2027年竣工。

International School:

- Walton Foreign Language School: a 12-year bilingual internationalized school from elementary school, middle school to high school
- Shanghai International Studies University Affiliated Taicang School: it offers 4-track primary education, 6-track junior high education and 4-track senior high education, and is expected to be completed in 2027.



华顿外国语学校
Walton Foreign Language School



上海外国语大学附属太仓学校
Shanghai International Studies University
Affiliated Taicang School

商业配套 COMMERCIAL FACILITIES



华发铂尔曼酒店
Pullman Hotel



玛丽蒂姆酒店
Maritim Hotel



太仓宝龙福朋喜来登酒店
Four Points by Sheraton Taicang



万达广场
Wanda Plaza



罗腾堡风情街
Rothenburg Waterfront



太仓美术馆
Taicang Art Museum

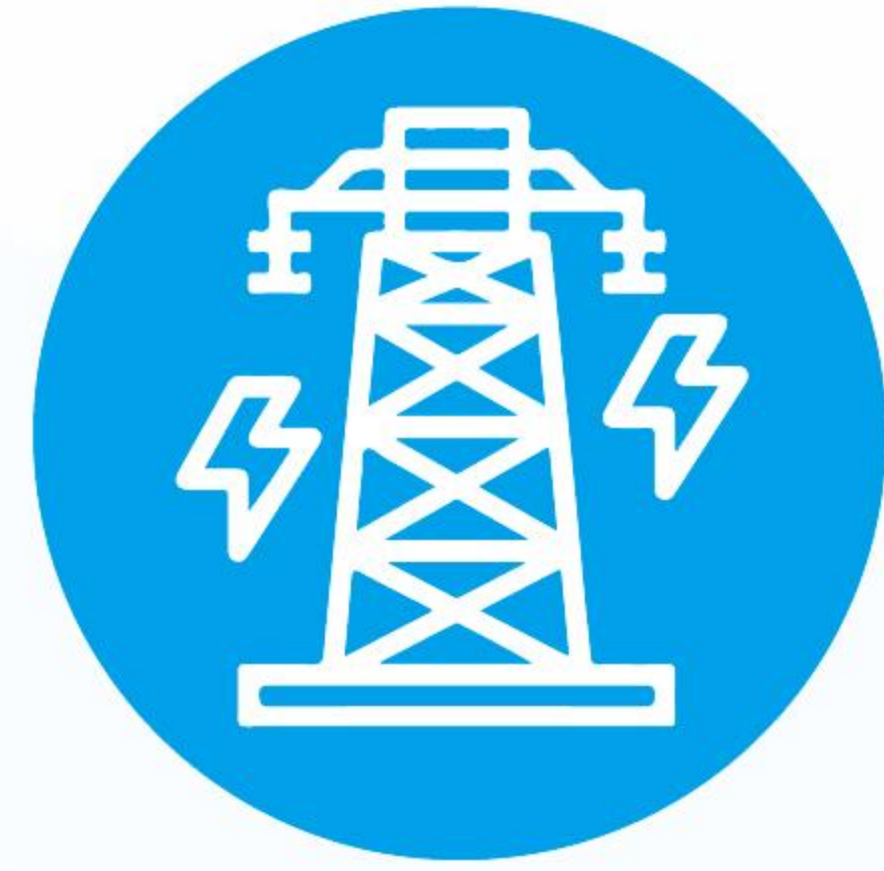


太仓大剧院
Taicang Grand Theatre



太仓博物馆
Taicang Museum

基础设施 INFRASTRUCTURE



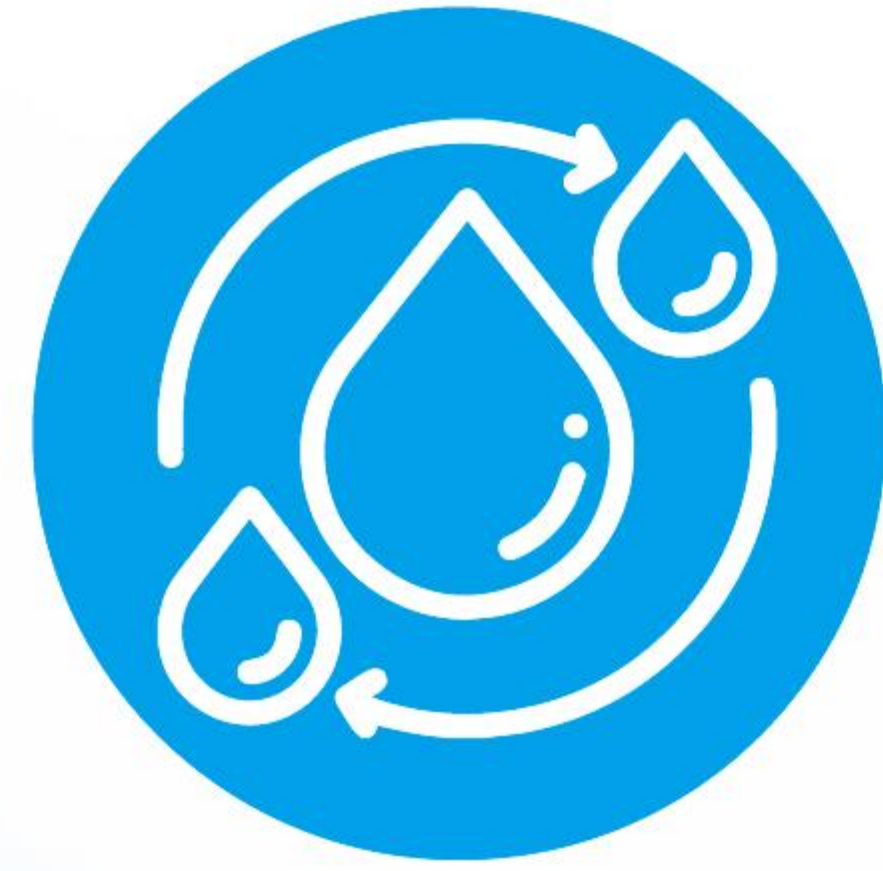
太仓现有华能电厂、环保电厂、国华电厂等多家供电厂,总电厂装机容量达470多万千瓦,占江苏省发电总量的10%,为市内企业提供了用电需求的充分保障。

There are Huaneng Power Plant, Huanbao Power plant, Guohua Power Plant and other power supply plants in Taicang, with a total installed capacity of more than 4.7 million kilowatts, accounting for 10% of the total power generation in Jiangsu Province, providing sufficient power supply protection for the city's enterprises.



太仓市拥有覆盖全市的长江引水工程,日供水能力达70万吨,出水厂压力为0.2到0.33MPa,水质优良,常规PH值为7.4。

Taicang has built a water treatment plant that diverts water from the Yangtze River to produce drinkable water. It supplies the whole city with 700,000 tons of quality drinking water (PH value: 7.4; 0.2- 0.33MPa) on a daily basis.



现有污水处理厂10座,日处理能力为25.5万吨,处理后水质达到国家类污水排放标准GB8978-1996中一级排放标准。

There are 10 sewage treatment plants with a daily treatment capacity of 255,000 tons, and the treated water quality has reached the national class sewage discharge standard GB8978-1996.



太仓市建有天然气接收门站3座,设计供气能力9亿立方米。全市建成天然气管道1,419公里,覆盖各区镇。

Taicang has three natural gas terminals with a designed gas supply capacity of 900 million cubic meters. In total 1,419 kilometers of natural gas pipelines have been built in the city, covering all districts and towns.

非居民生活用水价格: Price of domestic water for non-residents

- 4.11元/立方米(含污水处理费1.7元/立方米)
- RMB 4.11 /m³ (including 1.7 yuan/m³ sewage treatment fee)

工商业用电: Price of Industrial and Commercial Electricity

- 单一制:0.7-0.75元/千瓦时
- Single-part: RMB 0.7-0.75yuan/kwh
- 两部制:0.57-0.65元/千瓦时
- Two-part: RMB 0.57-0.65yuan/kwh
- 变压器容量:26-32元/千伏安·月
- Transformer capacity electricity: RMB 26-32yuan/kva · month

(电价每月浮动,请以国网苏州供电公司公告为准)
The electricity price fluctuates monthly. Please refer to the announcement of State Grid Suzhou Power Supply Company for details.

非居民用管道天然气销售价格: Sales price of pipeline natural gas for non-residents:

- 3.689元/立方米(非采暖季)
- RMB 3.689yuan/m³ (non-heating season)
- 4.044元/立方米(采暖季)
- RMB 4.044yuan/m³ (heating season)

蒸汽价格: Steam Price

- 208.4元/吨
- RMB 208.4yuan/ton

营商环境 BUSINESS ENVIRONMENT

亲商护商、服务高效的改革创新之城 舒心安心之地

A business-friendly, efficient, innovative, and livable City

政企互信+企业诚信

Mutual trust between government and investors, and investor integrity

成交即发证、交地即开工、竣工即登记

Permits are granted upon payment of premium, construction can be started upon delivery of the land, and the property will be registered upon completion.

重点项目开工平均审批时间6天

Average approval time for key projects: 6 days

江苏省内率先推出“建筑工程规划许可证电子报批”

First to launch “e-approval for construction planning permit” in Jiangsu province

立项后取得施工许可证 20天

Construction permit issuance time after approval: 20 days

“一网通办”“一窗受理”“一次办成”

One single web portal; one-stop processing; one-off approval



知识产权 INTELLECTUAL PROPERTY RIGHTS

首批国家知识产权试点城市

One of the 1st pilot cities designated for the National IPR Protection program

对“四新”经济 (新技术、新产业、新业态、新模式) 形态给予包容审慎监管

Inclusive and prudent regulation of 4 new areas (new technology, new industries, new commercial activities, and new modes)

全国专利保护 重点联系基地

Key national focal point for patent protection



太仓投资促进
Taicang Invest

江苏省太仓市招商局

Taicang Investment Promotion Bureau of Jiangsu Province

地址Address: 中国江苏省太仓市县府东街99号6号楼B座二楼 邮编:215400
2nd Floor Tower 6B, No.99 East Xianfu Street, Taicang City, Jiangsu Province, PRC 215400

电话 TEL: (+86) 512 5328 5088

邮箱 Email: zsj@taicang.gov.cn

网址 Website: invest.taicang.gov.cn

