

Airport upgraded for visitor influx

72-hour visa-free policy prompts improvements to welcome travelers

By XU XIAO
xuxiao@chinadaily.com.cn

Travelers at Chengdu Shuangliu International Airport can enjoy Mapo tofu and have a shower before they board their flight as part of the improved services at the airport's restored international terminal.



72-HOUR VISA-FREE

China's western portal city Chengdu, in Sichuan province, has attracted more overseas visitors since it brought in the 72-hour visa-free policy last September, said an airport official.

The airport has improved its facilities to provide better services to international guests.

After five months of construction, the first-class cabin and tax-free shops in the airport's international terminal were completed in late April.

The new first-class cabin can host 140 people at one time. It is the only first-class cabin to provide cooked meals and showers in central west China, an airport official said.

The official told reporters that the meals included some renowned Sichuan cuisines such as Mapo tofu and spicy diced chicken with peanuts.

The cabin follows a Sichuan theme, with folding screens decorated with the pictures of pandas and Sichuan embroi-

3,029
foreigners

passed through Chengdu customs between September and March

400
square meters

tax-free shop in Chengdu Shuangliu International Airport

dery, both hallmarks of the province's culture.

French windows give travelers views outside and the new 400-square-meter tax-free shop was inspired by counterparts in Hong Kong, Taipei and Singapore.

The shop offers perfume, cosmetics, tobacco and wine as well as food, health-care products and travel accessories.

More top perfume and cosmetics brands are due to be added to the shop's range, according to an airport official.

An airport spokesman told reporters that they supported the 72-hour visa-free policy through commercials and by improving hardware construction and elevating the management level.

Chengdu was the fourth Chinese city, after Beijing, Shanghai and Guangzhou, to implement the 72-hour visa-free policy for foreigners.

In 2013, the overall capacity of Chengdu Shuangliu Inter-



Chengdu Shuangliu International Airport offers better services to visitors from home and abroad.

national Airport reached more than 500,000 tons.

There were altogether more than 250,532 airplanes taking off and landing from the airport, with the daily average number of the airplanes surpassing 687. To date, Chengdu has opened 73 international

flights. Statistics from the Exit-Entry Administration Department of Chengdu Municipal Public Security Bureau showed that between September and March, 3,029 foreigners passed through Chengdu customs.

Most of them were from

the United States, Britain and Germany.

A spokesman for the exit-entry administration department said the bureau made preparations for the new policy. He said these included training the city's public security departments and hotels

and the launch of a round-the-clock hotline in both English and Chinese to answer questions about the policy.

The department promoted the policy through visits to foreign accumulated communities, companies and colleges, brochures sent to foreigners in

Chengdu and messages broadcast on local TV stations.

The spokesman said the department also helped foreigners who have to stay longer than 72 hours in Chengdu by processing all the permits needed within three working days.

HUANG JINGUO / FOR CHINA DAILY

Joanna Real Estate
One of the Largest Real Estate Agencies in China
Hotline: +86 (10) 8458 5667 / 5267 139 1115 3118
E-mail: sales@joannarealestate.com.cn
website: beijing.joannarealestate.com.cn

Villas for Rent in Beijing

Airport Expressway Area Chateau Regalia 4Br. 324sqm ¥ 33,000 4+1Br. 470sqm ¥ 40,000 Dynasty Garden 5Br. F 420sqm ¥ 35,000 5Br. H 600sqm ¥ 45,000 4Br. H 700sqm ¥ 50,000 Rits Garden 4Br. 400sqm ¥ 40,000 4Br.H 550sqm ¥ 48,000	5Br. 600sqm ¥ 45,000 Australian Garden 4Br. 350/400sqm ¥ 33,000 4Br. 500sqm ¥ 35,000 LA GRANDE VILLA 4Br. 270sqm ¥ 20,000 4Br. 310sqm ¥ 32,000 Jing Shun Road Close to WAB Beijing Riviera 4Br. A 402sqm ¥ 48,000 4Br. B 405sqm ¥ 48,000	4+1Br.C 294sqm ¥ 40,000 3Br. D 251sqm ¥ 32,000 Lane Bridge Villa 4Br. 375sqm ¥ 36,000 6Br. 430sqm ¥ 48,000 Orchid Garden 4Br. 275sqm ¥ 29,000 4Br. 310sqm ¥ 32,000 4Br. 400sqm ¥ 36,000 Grand Hills 4Br. C 502sqm ¥ 55,000	4Br. N 558sqm ¥ 65,000 6Br. J 800sqm ¥ 120,000 Quan Fa Garden 4Br. 280sqm ¥ 25,000 5Br. 650sqm ¥ 30,000 Jing Shun Road Close to ISB Yosemite 4Br. B1 498sqm ¥ 48,000 4Br. B4 564sqm ¥ 60,000 4Br. B3 596sqm ¥ 62,000 4Br. C2 389sqm ¥ 40,000	4Br. C9 356sqm ¥ 38,000 Beijing Eurovillage 4Br. 280sqm ¥ 28,000 4Br. 400sqm ¥ 30,000 Le Leman Lake Villa 4Br. A 682sqm ¥ 50,000 4Br. B 578sqm ¥ 45,000 4Br. C 516sqm ¥ 40,000 3Br. E 315sqm ¥ 20,000 Capital Paradise 3Br. 150sqm ¥ 12,000	3Br. 162sqm ¥ 16,000 4Br. 229sqm ¥ 23,000 River Garden Villa 3Br. A 250sqm ¥ 30,000 4Br. C 300sqm ¥ 33,000 5Br. F 400sqm ¥ 48,000 Dragon Bay Villa 4Br. 300sqm ¥ 25,000 4Br. 450sqm ¥ 38,000 4Br. 550sqm ¥ 50,000	Rose and Ginkgo Villas 4Br. 350sqm ¥ 36,000 4Br. 475sqm ¥ 50,000 Courtyards for Rent Houhai Courtyard 4Br. 320sqm ¥ 60,000 Gulou Courtyards 3Br. 290sqm ¥ 30,000 Wangfujing Courtyard 4Br. 320sqm ¥ 35,000
---------------------------------------------------------------------------------------------------------------------------------------------------------------------------------------------------------------------------------------------------------------------	---------------------------------------------------------------------------------------------------------------------------------------------------------------------------------------------------------------------------------------------------------------------------------------------	-------------------------------------------------------------------------------------------------------------------------------------------------------------------------------------------------------------------------------------------------------------------------------	------------------------------------------------------------------------------------------------------------------------------------------------------------------------------------------------------------------------------------------------------------------------------------------	------------------------------------------------------------------------------------------------------------------------------------------------------------------------------------------------------------------------------------------------------------------------------------------------	------------------------------------------------------------------------------------------------------------------------------------------------------------------------------------------------------------------------------------------------------------	--------------------------------------------------------------------------------------------------------------------------------------------------------------------------------------------------------------------------------------------------------------------------



Yosemite (B3) - 优山美地
ID: 00643 590sqm, 4Br. 5Ba. ¥60,000
townhouse, big garden, big balcony, high ceiling



Lane Bridge Villa - 长岛澜桥
ID: 20390 370sqm, 4Br. 2Ba. ¥38,000
corner house, big garden, high ceiling living room



River Garden Villa (II, B) - 裕京花园
ID: 07732 250sqm, 4Br. 3Ba. ¥32,000
detached, big garden, big balcony, sunroom



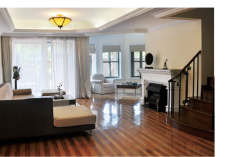
Orchid Garden - 卓锦万代
ID: 40786 450sqm, 6Br. 4Ba. ¥43,000
corner house, big garden, open kitchen, floor heating



Grand Hills (I) - 大湖山庄
ID: 05521 500sqm, 4Br. 4Ba. ¥55,000
detached, big garden, big balcony



Rose and Ginkgo - 龙湖滟澜山
ID: 01105 350sqm, 6Br. 4Ba. ¥35,000
townhouse, big garden, open kitchen, floor heating



Beijing Riviera (A) - 香江花园
ID: 40763 406sqm, 5Br. 4Ba. ¥45,000
detached, big garden, big balcony, big terrace

Apartments for Rent in Beijing

CBD Area Central Park (I-III) 2Br. 138sqm ¥ 18,000 3Br. 148sqm ¥ 23,000 3Br. 199sqm ¥ 28,000 4Br. 265sqm ¥ 43,000 4Br. 465sqm ¥ 90,000 Central Park (III) 2Br. 140sqm ¥ 20,000 3+1Br. 171sqm ¥ 28,000 3Br. 188sqm ¥ 28,000 3+1Br. 220sqm ¥ 38,000 Central Park (IV) 2Br. 138sqm ¥ 20,000	3Br. 188sqm ¥ 31,000 4Br. 264sqm ¥ 42,000 4Br. 286sqm ¥ 45,000 Global Trade Mansion 2Br. 171sqm ¥ 18,000 3Br. 180sqm ¥ 20,000 3Br. 256sqm ¥ 25,000 Fortune Plaza 2Br. 138sqm ¥ 13,000 2Br. 166sqm ¥ 15,000 3Br. 205sqm ¥ 19,000 3Br. 253sqm ¥ 28,000 CBD Private Castle 2Br. 150sqm ¥ 14,000	3Br. 170sqm ¥ 18,000 3Br. 230sqm ¥ 26,000 Xanadu Apartment 1+1Br. 110sqm ¥ 14,000 2+1Br. 175sqm ¥ 24,000 China Center Place 2Br. 135sqm ¥ 13,000 3Br. 213sqm ¥ 20,000 Gemdale Int'l Garden 2Br. 112sqm ¥ 15,000 3Br. 200sqm ¥ 23,000 Sanlitun Area GuangCai Int'l Apartment 3Br. 217sqm ¥ 22,000
----------------------------------------------------------------------------------------------------------------------------------------------------------------------------------------------------------------------------------------------------------------------------------------------------------------------------------------	----------------------------------------------------------------------------------------------------------------------------------------------------------------------------------------------------------------------------------------------------------------------------------------------------------------------------------------------------------	----------------------------------------------------------------------------------------------------------------------------------------------------------------------------------------------------------------------------------------------------------------------------------------------------------------------------------------------------------------------------



Centrium Residence - 瑞安君汇
ID: 39623 130sqm, 2Br. 2Ba. ¥28,000
garden view, big balcony, open kitchen, floor heating



Boya Garden - 博雅园
ID: 18592 170sqm, 3Br. 2Ba. ¥16,000
high floor, golf course view, good sunlight



Windsor Avenue - 温莎大道
ID: 10884 210sqm, 3Br. 3Ba. ¥33,000
high floor, south facing, good view, big balcony



East Avenue - 逸盛阁
ID: 05334 230sqm, 3Br. 3Ba. ¥38,000
penthouse, south facing, floor heating



Central Park (III) - 新城国际
ID: 14073 270sqm, 4Br. 3Ba. ¥50,000
high floor, garden view, big balcony



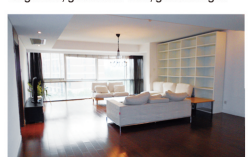
SanlitunSOHO - 三里屯 SOHO
ID: 19645 166sqm, 2+1Br. 2Ba. ¥23,000
middle floor, good view, good sunlight



Concordia Plaza - 嘉和丽园
ID: 18901 257sqm, 4Br. 2Ba. ¥18,000
middle floor, big balcony, good sunlight



Seasons Park - 海晟名苑
ID: 03672 250sqm, 4Br. 3Ba. ¥36,000
middle floor, garden view, transversal windows



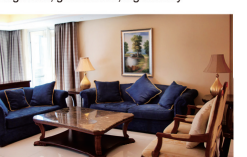
Upper East Side - 阳光上东
ID: 05330 222sqm, 3Br. 2Ba. ¥26,000
middle floor, garden view



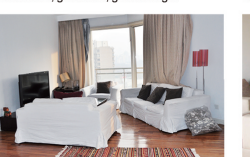
Palm Springs - 棕榈泉
ID: 10884 210sqm, 3Br. 2Ba. ¥31,000
garden view, nice balcony, value for money



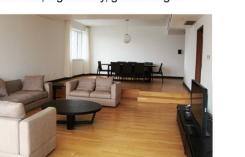
Chevalier - 九都汇
ID: 22649 450sqm, 5+1Br. 5Ba. ¥55,000
duplex, south facing, nice garden, big balcony



GuangCai Int'l Apartment - 光彩国际公寓
ID: 01396 270sqm, 4Br. 2Ba. ¥30,000
middle floor, south facing



Park Avenue - 公园大道
ID: 03134 173sqm, 3Br. 2Ba. ¥23,000
high floor, south facing, nice balcony



Park Apartment - 天安豪园
ID: 01263 265sqm, 4Br. 2Ba. ¥32,000
middle floor, south facing, nice balcony

Courtyards for Rent in Beijing



Xidan Courtyard
ID: 40756 480sqm 6Br. 3Ba. ¥120,000
big yard, good location



Dongsi Courtyard
ID: 40780 400sqm 3Br. 2Ba. ¥70,000
big yard, attic



Houhai Courtyard
ID: 05373 300sqm 3Br. 3Ba. ¥63,000
classical style yard, open kitchen



Nanluo Guixiang Courtyard
ID: 40768 300sqm 5Br. 2Ba. ¥45,000
big yard, big terrace, open kitchen



Deshengmen Courtyard
ID: 40778 400sqm 8Br. 3Ba. ¥53,000
big yard, big terrace

JRE面向业主主推“物业委托服务”。我们不但为业主提供家居装修翻新服务、家具租赁服务、钥匙托管服务及保洁服务，还将保证在三个月内成功出租业主的物业。
咨询热线: 139 1115 3118

